



Datasheet for ABIN6244234
anti-DLEU7 antibody (AA 58-89)



[Go to Product page](#)

1 Image

Overview

Quantity:	200 µL
Target:	DLEU7
Binding Specificity:	AA 58-89
Reactivity:	Human
Host:	Rabbit
Clonality:	Polyclonal
Conjugate:	This DLEU7 antibody is un-conjugated
Application:	Western Blotting (WB)

Product Details

Immunogen:	This DLEU7 antibody is generated from a rabbit immunized with a KLH conjugated synthetic peptide between 58-89 amino acids from human DLEU7.
Clone:	RB54115
Isotype:	Ig Fraction
Purification:	This antibody is purified through a protein A column, followed by peptide affinity purification.

Target Details

Target:	DLEU7
Alternative Name:	DLEU7 (DLEU7 Products)
Molecular Weight:	23924

Target Details

UniProt: [Q6UYE1](#)

Application Details

Application Notes: WB: 1:2000

Restrictions: For Research Use only

Handling

Format: Liquid

Buffer: Purified polyclonal antibody supplied in PBS with 0.09 % (W/V) sodium azide.

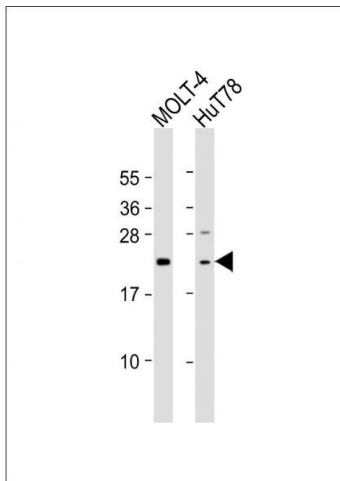
Preservative: Sodium azide

Precaution of Use: This product contains Sodium azide: a POISONOUS AND HAZARDOUS SUBSTANCE which should be handled by trained staff only.

Storage: 4 °C,-20 °C

Expiry Date: 6 months

Images



Western Blotting

Image 1. All lanes : Anti-DLEU7 Antibody (N-Term) at 1:2000 dilution Lane 1: MOLT-4 whole cell lysate Lane 2: HuT78 whole cell lysate Lysates/proteins at 20 µg per lane. Secondary Goat Anti-Rabbit IgG, (H+L), Peroxidase conjugated at 1/10000 dilution. Predicted band size : 24 kDa Blocking/Dilution buffer: 5 % NFDN/TBST.