



[Go to Product page](#)

Datasheet for ABIN6244240  
**anti-MFSD6L antibody (N-Term)**

1 Image

Overview

Quantity:	400 µL
Target:	MFSD6L
Binding Specificity:	AA 156-189, N-Term
Reactivity:	Human
Host:	Rabbit
Clonality:	Polyclonal
Conjugate:	This MFSD6L antibody is un-conjugated
Application:	Western Blotting (WB)

Product Details

Immunogen:	This MFSD6L antibody is generated from a rabbit immunized with a KLH conjugated synthetic peptide between 156-189 amino acids from the N-terminal region of human MFSD6L.
Clone:	RB48721
Isotype:	Ig Fraction
Purification:	This antibody is purified through a protein A column, followed by peptide affinity purification.

Target Details

Target:	MFSD6L
Alternative Name:	MFSD6L ( <a href="#">MFSD6L Products</a> )
Molecular Weight:	64005

## Target Details

UniProt: [Q8IWD5](#)

## Application Details

Application Notes: WB: 1:2000

Restrictions: For Research Use only

## Handling

Format: Liquid

Buffer: Purified polyclonal antibody supplied in PBS with 0.09 % (W/V) sodium azide.

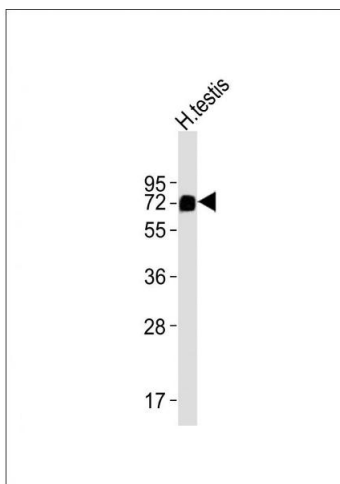
Preservative: Sodium azide

Precaution of Use: This product contains Sodium azide: a POISONOUS AND HAZARDOUS SUBSTANCE which should be handled by trained staff only.

Storage: 4 °C,-20 °C

Expiry Date: 6 months

## Images



### Western Blotting

**Image 1.** Anti-MFSD6L Antibody (N-term) at 1:2000 dilution + human testis lysates Lysates/proteins at 20 µg per lane. Secondary Goat Anti-Rabbit IgG, (H+L), Peroxidase conjugated at 1/10000 dilution Predicted band size : 64 kDa Blocking/Dilution buffer: 5 % NFDM/TBST.