

Datasheet for ABIN6244241
anti-SPCS1 antibody (AA 66-100)[Go to Product page](#)

1 Image

Overview

Quantity:	50 µL
Target:	SPCS1
Binding Specificity:	AA 66-100
Reactivity:	Human
Host:	Rabbit
Clonality:	Polyclonal
Conjugate:	This SPCS1 antibody is un-conjugated
Application:	Western Blotting (WB)

Product Details

Immunogen:	This SPCS1 antibody is generated from a rabbit immunized with a KLH conjugated synthetic peptide between 66-100 amino acids from the Central region of human SPCS1.
Clone:	RB53137
Isotype:	Ig Fraction
Purification:	This antibody is purified through a protein A column, followed by peptide affinity purification.

Target Details

Target:	SPCS1
Alternative Name:	SPCS1 (SPCS1 Products)
Background:	Component of the microsomal signal peptidase complex which removes signal peptides from

Target Details

	nascent proteins as they are translocated into the lumen of the endoplasmic reticulum.
Molecular Weight:	18298
UniProt:	Q9Y6A9
Pathways:	Peptide Hormone Metabolism

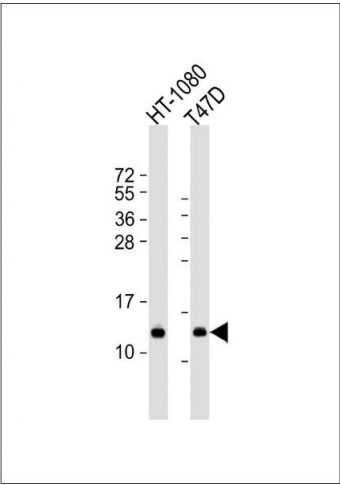
Application Details

Application Notes:	WB: 1:2000
Restrictions:	For Research Use only

Handling

Format:	Liquid
Buffer:	Purified polyclonal antibody supplied in PBS with 0.09 % (W/V) sodium azide.
Preservative:	Sodium azide
Precaution of Use:	This product contains Sodium azide: a POISONOUS AND HAZARDOUS SUBSTANCE which should be handled by trained staff only.
Storage:	4 °C,-20 °C
Expiry Date:	6 months

Images



Western Blotting

Image 1. All lanes : Anti-SPCS1 Antibody (Center) at 1:2000 dilution Lane 1: HT-1080 whole cell lysate Lane 2: T47D whole cell lysate Lysates/proteins at 20 µg per lane. Secondary Goat Anti-Rabbit IgG, (H+L), Peroxidase conjugated at 1/10000 dilution. Predicted band size : 12 kDa Blocking/Dilution buffer: 5 % NFDM/TBST.