



[Go to Product page](#)

Datasheet for ABIN6244243

anti-SLC5A12 antibody (C-Term)

3 Images

Overview

Quantity:	400 µL
Target:	SLC5A12
Binding Specificity:	AA 576-605, C-Term
Reactivity:	Human
Host:	Rabbit
Clonality:	Polyclonal
Conjugate:	This SLC5A12 antibody is un-conjugated
Application:	Western Blotting (WB), Flow Cytometry (FACS), Immunohistochemistry (Paraffin-embedded Sections) (IHC (p))

Product Details

Immunogen:	This SLC5A12 antibody is generated from rabbits immunized with a KLH conjugated synthetic peptide between 576-605 amino acids from the C-terminal region of human SLC5A12.
Clone:	RB27881
Isotype:	Ig Fraction
Purification:	This antibody is purified through a protein A column, followed by peptide affinity purification.

Target Details

Target:	SLC5A12
Alternative Name:	SLC5A12 (SLC5A12 Products)

Target Details

Background: Normal blood lactate is maintained at about 1.5 mM, and little filtered lactate is excreted in urine. Reabsorption of lactate is mediated by the low-affinity Na(+)-coupled lactate transporter SLC5A12 in the initial part of the proximal tubule and by the high-affinity Na(+)-coupled lactate transporter SLC5A8 (MIM 608044) in the distal proximal tubule (Gopal et al., 2007 [PubMed 17692818]).

Molecular Weight: 67647

NCBI Accession: [NP_848593](#)

UniProt: [Q1EHB4](#)

Application Details

Application Notes: WB: 1:2000. IHC-P: 1:50~100. FC: 1:10~50

Restrictions: For Research Use only

Handling

Format: Liquid

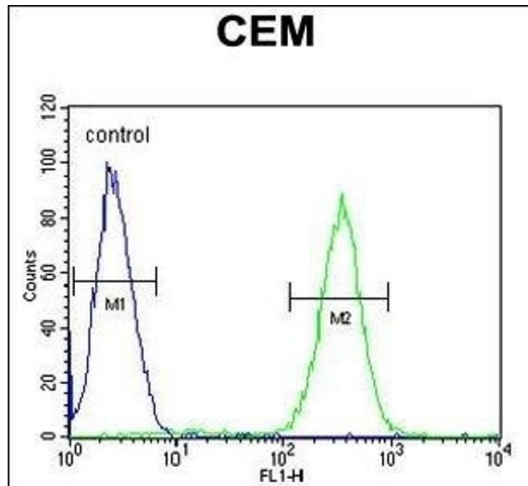
Buffer: Purified polyclonal antibody supplied in PBS with 0.09 % (W/V) sodium azide.

Preservative: Sodium azide

Precaution of Use: This product contains Sodium azide: a POISONOUS AND HAZARDOUS SUBSTANCE which should be handled by trained staff only.

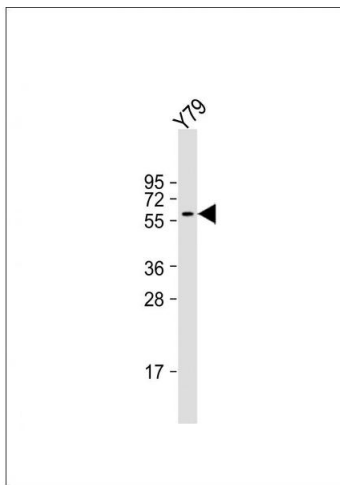
Storage: 4 °C, -20 °C

Expiry Date: 6 months



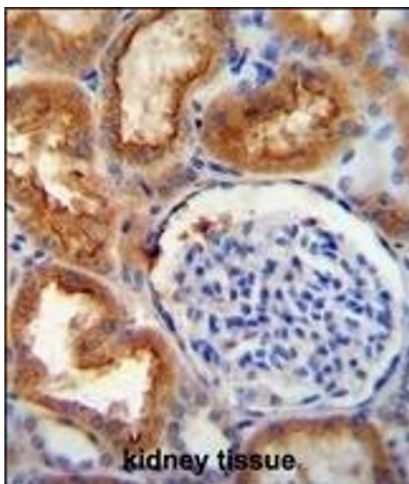
Flow Cytometry

Image 1. SLC5A12 Antibody (C-term) (ABIN6244243 and ABIN6577316) flow cytometric analysis of CEM cells (right histogram) compared to a negative control cell (left histogram). FITC-conjugated goat-anti-rabbit secondary antibodies were used for the analysis.



Western Blotting

Image 2. Anti-SLC5A12 Antibody (C-term) at 1:2000 dilution + Y79 whole cell lysate Lysates/proteins at 20 µg per lane. Secondary Goat Anti-Rabbit IgG, (H+L), Peroxidase conjugated at 1/10000 dilution. Predicted band size : 68 kDa Blocking/Dilution buffer: 5 % NFDm/TBST.



Immunohistochemistry (Paraffin-embedded Sections)

Image 3. SLC5A12 antibody (C-term) (ABIN6244243 and ABIN6577316) immunohistochemistry analysis in formalin fixed and paraffin embedded human kidney tissue followed by peroxidase conjugation of the secondary antibody and DAB staining. This data demonstrates the use of the SLC5A12 antibody (C-term) for immunohistochemistry. Clinical relevance has not been evaluated.