



[Go to Product page](#)

Datasheet for ABIN6244244  
**anti-MAB21L2 antibody (AA 185-219)**

1 Image

### Overview

Quantity:	400 µL
Target:	MAB21L2
Binding Specificity:	AA 185-219
Reactivity:	Zebrafish (Danio rerio)
Host:	Rabbit
Clonality:	Polyclonal
Conjugate:	This MAB21L2 antibody is un-conjugated
Application:	Western Blotting (WB)

### Product Details

Immunogen:	This (DANRE) mab21l2 antibody is generated from a rabbit immunized with a KLH conjugated synthetic peptide between 185-219 amino acids from the Central region of human (DANRE) mab21l2.
Clone:	RB46517
Isotype:	Ig Fraction
Predicted Reactivity:	H, M
Purification:	This antibody is purified through a protein A column, followed by peptide affinity purification.

### Target Details

Target:	MAB21L2
---------	---------

## Target Details

Alternative Name:	mab2112 ( <a href="#">MAB21L2 Products</a> )
Background:	Required for eye morphogenesis. May promote the survival of proliferating retinal progenitor cells.
Molecular Weight:	41014
UniProt:	<a href="#">Q8UUZ1</a>
Pathways:	<a href="#">Embryonic Body Morphogenesis</a>

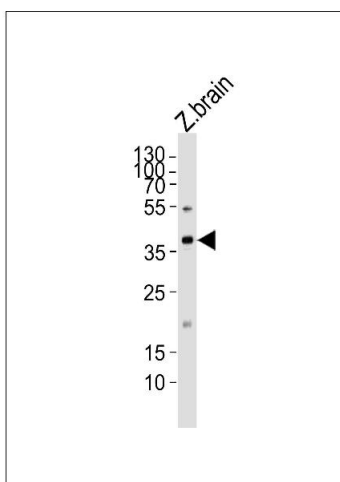
## Application Details

Application Notes:	WB: 1:1000
Restrictions:	For Research Use only

## Handling

Format:	Liquid
Buffer:	Purified polyclonal antibody supplied in PBS with 0.09 % (W/V) sodium azide.
Preservative:	Sodium azide
Precaution of Use:	This product contains Sodium azide: a POISONOUS AND HAZARDOUS SUBSTANCE which should be handled by trained staff only.
Storage:	4 °C,-20 °C
Expiry Date:	6 months

## Images



### Western Blotting

**Image 1.** Western blot analysis of lysate from zebra fish brain tissue lysate, using (DANRE) mab2112 Antibody (Center) (ABIN6244244 and ABIN6577575). (ABIN6244244 and ABIN6577575) was diluted at 1:1000. A goat anti-rabbit IgG H&L(HRP) at 1:10000 dilution was used as the secondary antibody. Lysate at 35 µg.