



[Go to Product page](#)

Datasheet for ABIN6244251

anti-SEC24B antibody (AA 1209-1239)

2 Images

Overview

Quantity:	200 µL
Target:	SEC24B
Binding Specificity:	AA 1209-1239
Reactivity:	Human
Host:	Rabbit
Clonality:	Polyclonal
Conjugate:	This SEC24B antibody is un-conjugated
Application:	Western Blotting (WB), Flow Cytometry (FACS)

Product Details

Immunogen:	This SEC24B antibody is generated from a rabbit immunized with a KLH conjugated synthetic peptide between 1209-1239 amino acids from the human region of human SEC24B.
Clone:	RB57641
Isotype:	Ig Fraction
Purification:	This antibody is purified through a protein A column, followed by peptide affinity purification.

Target Details

Target:	SEC24B
Alternative Name:	SEC24B (SEC24B Products)
Background:	Component of the COPII coat, that covers ER-derived vesicles involved in transport from the

Target Details

endoplasmic reticulum to the Golgi apparatus. COPII acts in the cytoplasm to promote the transport of secretory, plasma membrane, and vacuolar proteins from the endoplasmic reticulum to the Golgi complex.

Molecular Weight: 137418

UniProt: [O95487](#)

Application Details

Application Notes: WB: 1:2000. FC: 1:25

Restrictions: For Research Use only

Handling

Format: Liquid

Buffer: Purified polyclonal antibody supplied in PBS with 0.09 % (W/V) sodium azide.

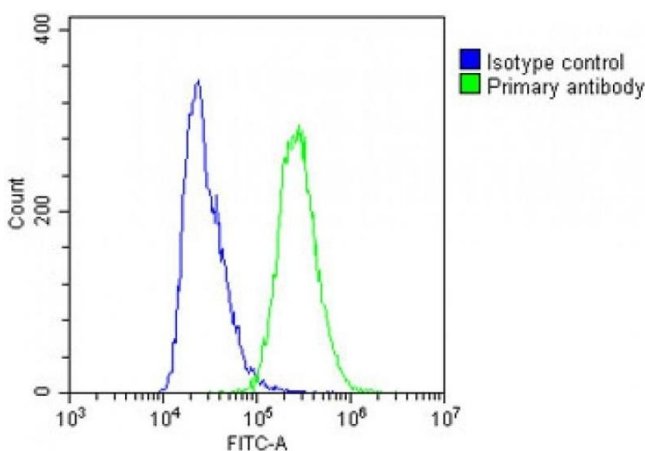
Preservative: Sodium azide

Precaution of Use: This product contains Sodium azide: a POISONOUS AND HAZARDOUS SUBSTANCE which should be handled by trained staff only.

Storage: 4 °C, -20 °C

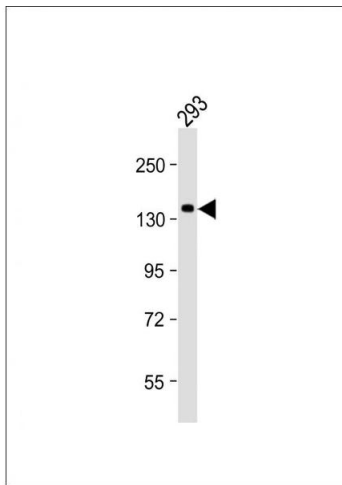
Expiry Date: 6 months

Images



Flow Cytometry

Image 1. Overlay histogram showing A431 cells stained with (ABIN6244251 and ABIN6578865)(green line). The cells were fixed with 2 % paraformaldehyde and then permeabilized with 90 % methanol for 10 min. The cells were then incubated in 2 % bovine serum albumin to block non-specific protein-protein interactions followed by the antibody (1:25 dilution) for 60 min at 37 °C. The secondary antibody used was Goat-Anti-Rabbit IgG, DyLight® 488 Conjugated Highly Cross-Adsorbed at 1/200 dilution for 40 min at Room temperature. Isotype control antibody (blue



line) was rabbit IgG1 (1 μ g/ 1×10^6 cells) used under the same conditions. Acquisition of >10,000 events was performed.

Western Blotting

Image 2. Anti-SEC24B Antibody (C-Term) at 1:2000 dilution + 293 whole cell lysate Lysates/proteins at 20 μ g per lane. Secondary Goat Anti-Rabbit IgG, (H+L), Peroxidase conjugated at 1/10000 dilution. Predicted band size : 137 kDa Blocking/Dilution buffer: 5 % NFDm/TBST.