



[Go to Product page](#)

Datasheet for ABIN6244253  
**anti-CHTF8 antibody (AA 344-377)**

1 Image

### Overview

Quantity:	200 µL
Target:	CHTF8
Binding Specificity:	AA 344-377
Reactivity:	Human
Host:	Rabbit
Clonality:	Polyclonal
Conjugate:	This CHTF8 antibody is un-conjugated
Application:	Western Blotting (WB)

### Product Details

Immunogen:	This CHTF8 antibody is generated from a rabbit immunized with a KLH conjugated synthetic peptide between 344-377 amino acids from human CHTF8.
Clone:	RB55911
Isotype:	Ig Fraction
Purification:	This antibody is purified through a protein A column, followed by peptide affinity purification.

### Target Details

Target:	CHTF8
Alternative Name:	CHTF8 ( <a href="#">CHTF8 Products</a> )
Background:	Potential tumor suppressor. Inhibits prostate tumor cell growth, when overexpressed.

## Target Details

Molecular Weight: 51391

UniProt: [P0CG12](#)

## Application Details

Application Notes: WB: 1:2000

Restrictions: For Research Use only

## Handling

Format: Liquid

Buffer: Purified polyclonal antibody supplied in PBS with 0.09 % (W/V) sodium azide.

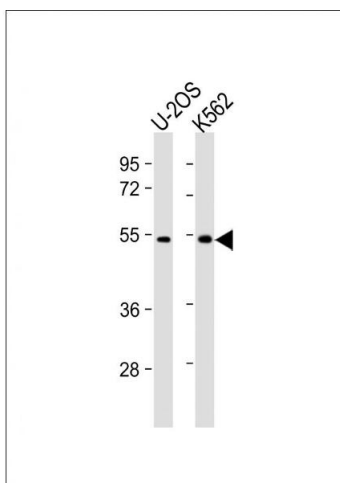
Preservative: Sodium azide

Precaution of Use: This product contains Sodium azide: a POISONOUS AND HAZARDOUS SUBSTANCE which should be handled by trained staff only.

Storage: 4 °C, -20 °C

Expiry Date: 6 months

## Images



### Western Blotting

**Image 1.** All lanes : Anti-CHTF8 Antibody (C-Term) at 1:2000 dilution Lane 1: U-2OS whole cell lysate Lane 2: K562 whole cell lysate Lysates/proteins at 20 µg per lane. Secondary Goat Anti-Rabbit IgG, (H+L), Peroxidase conjugated at 1/10000 dilution. Predicted band size : 51 kDa Blocking/Dilution buffer: 5 % NFDN/TBST.