

Datasheet for ABIN6244256
anti-SEC11C antibody (AA 85-120)[Go to Product page](#)

1 Image

Overview

Quantity:	50 µL
Target:	SEC11C
Binding Specificity:	AA 85-120
Reactivity:	Mouse
Host:	Rabbit
Clonality:	Polyclonal
Conjugate:	This SEC11C antibody is un-conjugated
Application:	Western Blotting (WB)

Product Details

Immunogen:	This SEC11C antibody is generated from a rabbit immunized with a KLH conjugated synthetic peptide between 85-120 amino acids from the Central region of human SEC11C.
Clone:	RB53135
Isotype:	Ig Fraction
Purification:	This antibody is purified through a protein A column, followed by peptide affinity purification.

Target Details

Target:	SEC11C
Alternative Name:	SEC11C (SEC11C Products)
Background:	Component of the microsomal signal peptidase complex which removes signal peptides from

Target Details

nascent proteins as they are translocated into the lumen of the endoplasmic reticulum.

Molecular Weight: 21542

UniProt: [Q9BY50](#)

Pathways: [Peptide Hormone Metabolism](#)

Application Details

Application Notes: WB: 1:2000

Restrictions: For Research Use only

Handling

Format: Liquid

Buffer: Purified polyclonal antibody supplied in PBS with 0.09 % (W/V) sodium azide.

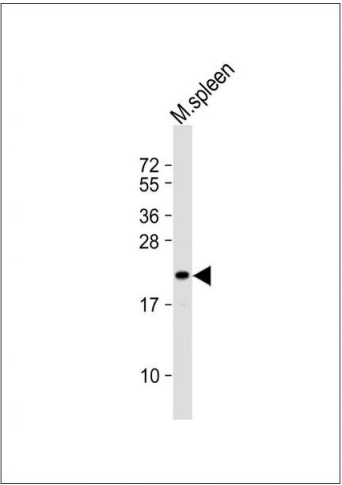
Preservative: Sodium azide

Precaution of Use: This product contains Sodium azide: a POISONOUS AND HAZARDOUS SUBSTANCE which should be handled by trained staff only.

Storage: 4 °C, -20 °C

Expiry Date: 6 months

Images



Western Blotting

Image 1. Anti-SEC11C Antibody (Center) at 1:2000 dilution + mouse spleen lysate Lysates/proteins at 20 µg per lane. Secondary Goat Anti-Rabbit IgG, (H+L), Peroxidase conjugated at 1/10000 dilution. Predicted band size : 22 kDa
Blocking/Dilution buffer: 5 % NFDM/TBST.