

Datasheet for ABIN6244263  
**anti-SAPCD2 antibody (AA 333-367)**



[Go to Product page](#)

1 Image

### Overview

Quantity:	200 µL
Target:	SAPCD2
Binding Specificity:	AA 333-367
Reactivity:	Human
Host:	Rabbit
Clonality:	Polyclonal
Conjugate:	This SAPCD2 antibody is un-conjugated
Application:	Western Blotting (WB)

### Product Details

Immunogen:	This SAPCD2 antibody is generated from a rabbit immunized with a KLH conjugated synthetic peptide between 333-367 amino acids from human SAPCD2.
Clone:	RB54325
Isotype:	Ig Fraction
Purification:	This antibody is purified through a protein A column, followed by peptide affinity purification.

### Target Details

Target:	SAPCD2
Alternative Name:	SAPCD2 ( <a href="#">SAPCD2 Products</a> )
Molecular Weight:	42637

## Target Details

UniProt: [Q86UD0](#)

## Application Details

Application Notes: WB: 1:2000

Restrictions: For Research Use only

## Handling

Format: Liquid

Buffer: Purified polyclonal antibody supplied in PBS with 0.09 % (W/V) sodium azide.

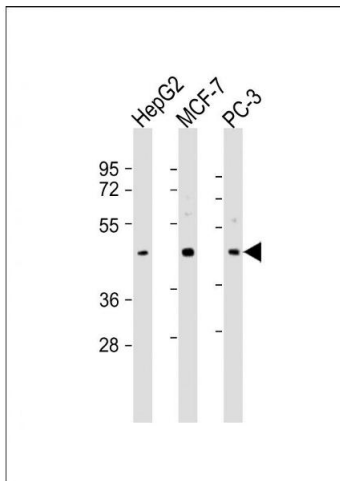
Preservative: Sodium azide

Precaution of Use: This product contains Sodium azide: a POISONOUS AND HAZARDOUS SUBSTANCE which should be handled by trained staff only.

Storage: 4 °C,-20 °C

Expiry Date: 6 months

## Images



### Western Blotting

**Image 1.** All lanes : Anti-SCD2 Antibody (C-Term) at 1:2000 dilution Lane 1: HepG2 whole cell lysate Lane 2: MCF-7 whole cell lysate Lane 3: PC-3 whole cell lysate Lysates/proteins at 20 µg per lane. Secondary Goat Anti-Rabbit IgG, (H+L), Peroxidase conjugated at 1/10000 dilution. Predicted band size : 43 kDa Blocking/Dilution buffer: 5 % NFDM/TBST.