

Datasheet for ABIN6244264
anti-FAM168B antibody (C-Term)[Go to Product page](#)

1 Image

Overview

Quantity:	400 µL
Target:	FAM168B
Binding Specificity:	AA 165-199, C-Term
Reactivity:	Mouse
Host:	Rabbit
Clonality:	Polyclonal
Conjugate:	This FAM168B antibody is un-conjugated
Application:	Western Blotting (WB)

Product Details

Immunogen:	This FAM168B antibody is generated from a rabbit immunized with a KLH conjugated synthetic peptide between 165-199 amino acids from the C-terminal region of human FAM168B.
Clone:	RB50857
Isotype:	Ig Fraction
Predicted Reactivity:	B, Rat
Purification:	This antibody is purified through a protein A column, followed by peptide affinity purification.

Target Details

Target:	FAM168B
Alternative Name:	FAM168B (FAM168B Products)

Target Details

Background: Modulates neuronal axonal outgrowth by acting as a negative regulator of CDC42 and STAT3 and a positive regulator of STMN2. Positive regulator of CDC27 (By similarity).

Molecular Weight: 20324

UniProt: [A1KXE4](#)

Application Details

Application Notes: WB: 1:1000

Restrictions: For Research Use only

Handling

Format: Liquid

Buffer: Purified polyclonal antibody supplied in PBS with 0.09 % (W/V) sodium azide.

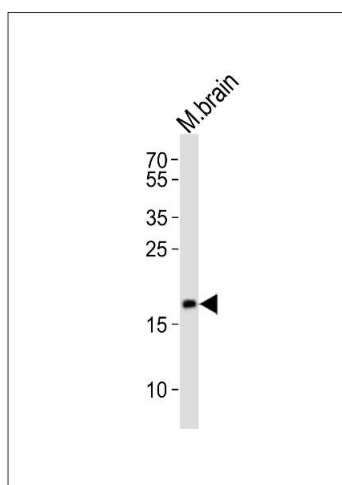
Preservative: Sodium azide

Precaution of Use: This product contains Sodium azide: a POISONOUS AND HAZARDOUS SUBSTANCE which should be handled by trained staff only.

Storage: 4 °C,-20 °C

Expiry Date: 6 months

Images



Western Blotting

Image 1. Western blot analysis of lysate from mouse brain tissue lysate, using FB Antibody (C-term) (ABIN6244264 and ABIN6577786). (ABIN6244264 and ABIN6577786) was diluted at 1:1000. A goat anti-rabbit IgG H&L(HRP) at 1:10000 dilution was used as the secondary antibody. Lysate at 20 µg.