

Datasheet for ABIN6244265
anti-FAM168B antibody (AA 105-139)[Go to Product page](#)

3 Images

Overview

Quantity:	400 µL
Target:	FAM168B
Binding Specificity:	AA 105-139
Reactivity:	Human
Host:	Rabbit
Clonality:	Polyclonal
Conjugate:	This FAM168B antibody is un-conjugated
Application:	Immunohistochemistry (IHC), Western Blotting (WB), Flow Cytometry (FACS)

Product Details

Immunogen:	This FAM168B antibody is generated from a rabbit immunized with a KLH conjugated synthetic peptide between 105-139 amino acids from the Central region of human FAM168B.
Clone:	RB50856
Isotype:	Ig Fraction
Purification:	This antibody is purified through a protein A column, followed by peptide affinity purification.

Target Details

Target:	FAM168B
Alternative Name:	FAM168B (FAM168B Products)
Background:	Modulates neuronal axonal outgrowth by acting as a negative regulator of CDC42 and STAT3

Target Details

and a positive regulator of STMN2. Positive regulator of CDC27 (By similarity).

Molecular Weight: 20324

UniProt: [A1KXE4](#)

Application Details

Application Notes: WB: 1:2000. IHC: 1:25. FC: 1:25

Restrictions: For Research Use only

Handling

Format: Liquid

Buffer: Purified polyclonal antibody supplied in PBS with 0.09 % (W/V) sodium azide.

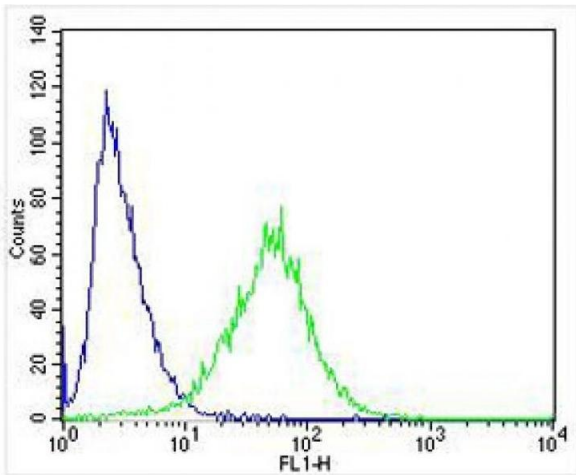
Preservative: Sodium azide

Precaution of Use: This product contains Sodium azide: a POISONOUS AND HAZARDOUS SUBSTANCE which should be handled by trained staff only.

Storage: 4 °C,-20 °C

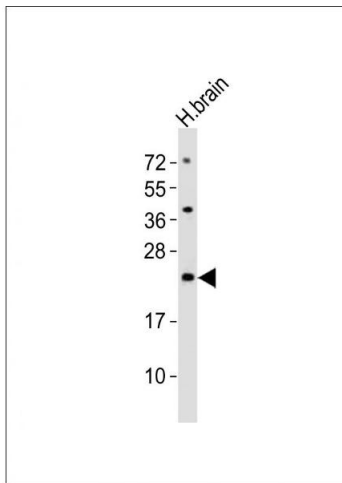
Expiry Date: 6 months

Images



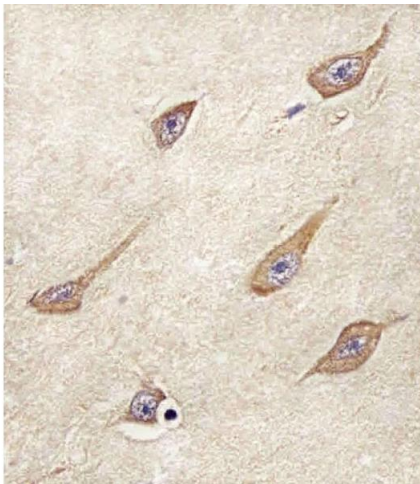
Flow Cytometry

Image 1. Overlay histogram showing SH-SY5Y cells stained with (ABIN6244265 and ABIN6577956) (green line). The cells were fixed with 4 % paraformaldehyde (10 min) and then permeabilized with 90 % methanol for 10 min. The cells were then incubated in 2 % bovine serum albumin to block non-specific protein-protein interactions followed by the antibody (, 1:25 dilution) for 60 min at 37 °C. The secondary antibody used was Alexa Fluor® 488 goat anti-rabbit IgG (H+L) (1583138) at 1/400 dilution for 40 min at 37 °C. Isotype control antibody (blue line) was rabbit IgG1 (1 µg/1x10⁶ cells) used under the same conditions. Acquisition of >10,000 events was performed.



Western Blotting

Image 2. Anti-FB Antibody (Center) at 1:2000 dilution + human brain lysates Lysates/proteins at 20 µg per lane. Secondary Goat Anti-Rabbit IgG, (H+L), Peroxidase conjugated at 1/10000 dilution Predicted band size : 20 kDa Blocking/Dilution buffer: 5 % NFDM/TBST.



Immunohistochemistry

Image 3. (ABIN6244265 and ABIN6577956) staining FB in Human brain tissue sections by Immunohistochemistry (IHC-P - paraformaldehyde-fixed, paraffin-embedded sections). Tissue was fixed with formaldehyde and blocked with 3 % BSA for 0.5 hour at room temperature, antigen retrieval was by heat mediation with a citrate buffer (pH 6). Samples were incubated with primary antibody (1/25) for 1 hour at 37 °C. A undiluted biotinylated goat polyvalent antibody was used as the secondary antibody.