



[Go to Product page](#)

Datasheet for ABIN6244266  
**anti-PPP1R3E antibody (AA 159-192)**

1 Image

### Overview

Quantity:	200 µL
Target:	PPP1R3E
Binding Specificity:	AA 159-192
Reactivity:	Human
Host:	Rabbit
Clonality:	Polyclonal
Conjugate:	This PPP1R3E antibody is un-conjugated
Application:	Western Blotting (WB)

### Product Details

Immunogen:	This PPP1R3E antibody is generated from a rabbit immunized with a KLH conjugated synthetic peptide between 159-192 amino acids from the Central region of human PPP1R3E.
Clone:	RB55087
Isotype:	Ig Fraction
Purification:	This antibody is purified through a protein A column, followed by peptide affinity purification.

### Target Details

Target:	PPP1R3E
Alternative Name:	PPP1R3E ( <a href="#">PPP1R3E Products</a> )
Background:	Acts as a glycogen-targeting subunit for PP1. PP1 is involved in glycogen metabolism and

## Target Details

contributes to the activation of glycogen synthase leading to an increase in glycogen synthesis.

Molecular Weight: 30644

UniProt: [Q9H7J1](#)

Pathways: [Cellular Glucan Metabolic Process, Regulation of Carbohydrate Metabolic Process](#)

## Application Details

Application Notes: WB: 1:2000

Restrictions: For Research Use only

## Handling

Format: Liquid

Buffer: Purified polyclonal antibody supplied in PBS with 0.09 % (W/V) sodium azide.

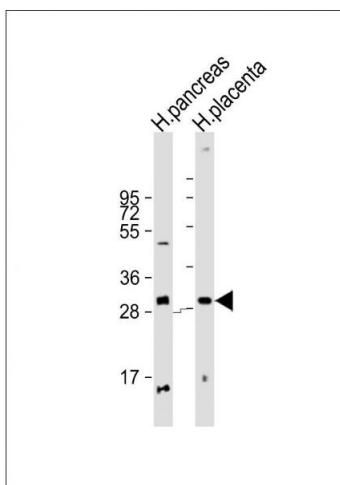
Preservative: Sodium azide

Precaution of Use: This product contains Sodium azide: a POISONOUS AND HAZARDOUS SUBSTANCE which should be handled by trained staff only.

Storage: 4 °C, -20 °C

Expiry Date: 6 months

## Images



### Western Blotting

**Image 1.** All lanes : Anti-P1R3E Antibody (Center) at 1:2000 dilution Lane 1: human pancreas lysate Lane 2: human placenta lysate Lysates/proteins at 20 µg per lane. Secondary Goat Anti-Rabbit IgG, (H+L), Peroxidase conjugated at 1/10000 dilution. Predicted band size : 31 kDa Blocking/Dilution buffer: 5 % NFDN/TBST.