

Datasheet for ABIN6244271
anti-TMEM239 antibody (N-Term)[Go to Product page](#)

1 Image

Overview

Quantity:	400 µL
Target:	TMEM239
Binding Specificity:	AA 5-38, N-Term
Reactivity:	Human
Host:	Rabbit
Clonality:	Polyclonal
Conjugate:	This TMEM239 antibody is un-conjugated
Application:	Western Blotting (WB)

Product Details

Immunogen:	This TMEM239 antibody is generated from a rabbit immunized with a KLH conjugated synthetic peptide between 5-38 amino acids from the N-terminal region of human TMEM239.
Clone:	RB49937
Isotype:	Ig Fraction
Purification:	This antibody is purified through a protein A column, followed by peptide affinity purification.

Target Details

Target:	TMEM239
Alternative Name:	TMEM239 (TMEM239 Products)
Molecular Weight:	21842

Target Details

UniProt: [Q8WW34](#)

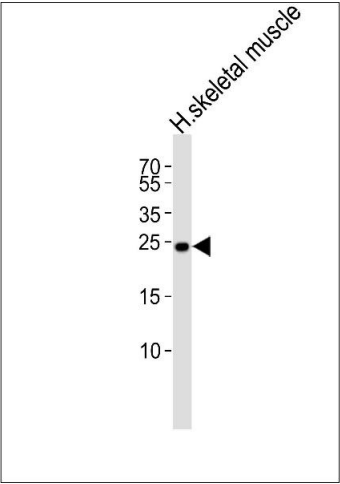
Application Details

Application Notes:	WB: 1:1000
Restrictions:	For Research Use only

Handling

Format:	Liquid
Buffer:	Purified polyclonal antibody supplied in PBS with 0.09 % (W/V) sodium azide.
Preservative:	Sodium azide
Precaution of Use:	This product contains Sodium azide: a POISONOUS AND HAZARDOUS SUBSTANCE which should be handled by trained staff only.
Storage:	4 °C,-20 °C
Expiry Date:	6 months

Images



Western Blotting

Image 1. Western blot analysis of lysate from human skeletal muscle tissue lysate, using TME Antibody (N-term) (ABIN6244271 and ABIN6577475). (ABIN6244271 and ABIN6577475) was diluted at 1:1000. A goat anti-rabbit IgG H&L(HRP) at 1:5000 dilution was used as the secondary antibody. Lysate at 35 µg.