

Datasheet for ABIN6244276  
**anti-Iron/zinc Purple Acid Phosphatase Protein (PAPL) (AA 378-413) antibody**

[Go to Product page](#)**1** Image

## Overview

Quantity:	400 µL
Target:	Iron/zinc Purple Acid Phosphatase Protein (PAPL)
Binding Specificity:	AA 378-413
Reactivity:	Zebrafish (Danio rerio)
Host:	Rabbit
Clonality:	Polyclonal
Conjugate:	Un-conjugated
Application:	Western Blotting (WB)

## Product Details

Immunogen:	This (DANRE) papl antibody is generated from a rabbit immunized with a KLH conjugated synthetic peptide between 378-413 amino acids of DANRE papl.
Clone:	RB47058
Isotype:	IgG
Purification:	This antibody is purified through a protein A column, followed by peptide affinity purification.

## Target Details

Target:	Iron/zinc Purple Acid Phosphatase Protein (PAPL)
Alternative Name:	pap1 ( <a href="#">PAPL Products</a> )
Molecular Weight:	50745

## Target Details

UniProt: [A5D6U8](#)

## Application Details

Application Notes: WB: 1:1000

Restrictions: For Research Use only

## Handling

Format: Liquid

Buffer: Purified polyclonal antibody supplied in PBS with 0.09 % (W/V) sodium azide.

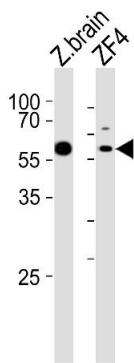
Preservative: Sodium azide

Precaution of Use: This product contains Sodium azide: a POISONOUS AND HAZARDOUS SUBSTANCE which should be handled by trained staff only.

Storage: 4 °C,-20 °C

Expiry Date: 6 months

## Images



### Western Blotting

**Image 1.** Western blot analysis of lysates from zebra fish brain, ZF4 tissue lysate (from left to right), using (DANRE) papl Antibody (C-term) Azb18704c. Azb18704c was diluted at 1:1000 at each lane. A goat anti-rabbit IgG H&L(HRP) at 1:5000 dilution was used as the secondary antibody. Lysates at 35 µg per lane.