

Datasheet for ABIN6244299
anti-LMYC antibody (N-Term)[Go to Product page](#)

1 Image

Overview

Quantity:	400 µL
Target:	LMYC (MYCL)
Binding Specificity:	AA 80-113, N-Term
Reactivity:	Zebrafish (Danio rerio)
Host:	Rabbit
Clonality:	Polyclonal
Conjugate:	This LMYC antibody is un-conjugated
Application:	Western Blotting (WB)

Product Details

Immunogen:	This DANRE mycl1a antibody is generated from a rabbit immunized with a KLH conjugated synthetic peptide between 80-113 amino acids from the N-terminal region of human DANRE mycl1a.
Clone:	RB47640
Isotype:	Ig Fraction
Purification:	This antibody is purified through a protein A column, followed by peptide affinity purification.

Target Details

Target:	LMYC (MYCL)
Alternative Name:	mycl1a (MYCL Products)

Target Details

Molecular Weight:	41380
UniProt:	Q9PSI9
Pathways:	Warburg Effect

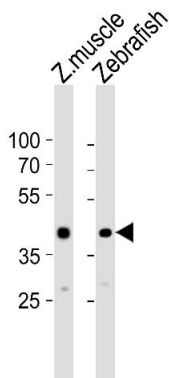
Application Details

Application Notes:	WB: 1:1000
Restrictions:	For Research Use only

Handling

Format:	Liquid
Buffer:	Purified polyclonal antibody supplied in PBS with 0.09 % (W/V) sodium azide.
Preservative:	Sodium azide
Precaution of Use:	This product contains Sodium azide: a POISONOUS AND HAZARDOUS SUBSTANCE which should be handled by trained staff only.
Storage:	4 °C,-20 °C
Expiry Date:	6 months

Images



Western Blotting

Image 1. Western blot analysis of lysates from zebra fish muscle, Zebrafish tissue lysate (from left to right), using DANRE mycl1a Antibody (N-term) Azb18711a. Azb18711a was diluted at 1:1000 at each lane. A goat anti-rabbit IgG H&L(HRP) at 1:5000 dilution was used as the secondary antibody. Lysates at 35 µg per lane.