

Datasheet for ABIN6244301  
**anti-alpha Tubulin antibody (AA 408-439)**



[Go to Product page](#)

3 Images

## Overview

Quantity:	200 µL
Target:	alpha Tubulin (TUBA1)
Binding Specificity:	AA 408-439
Reactivity:	Human
Host:	Rabbit
Clonality:	Polyclonal
Conjugate:	This alpha Tubulin antibody is un-conjugated
Application:	Western Blotting (WB), Immunofluorescence (IF), Flow Cytometry (FACS)

## Product Details

Immunogen:	This alpha Tubulin antibody is generated from a rabbit immunized with a KLH conjugated synthetic peptide between 408-439 amino acids from human alpha Tubulin.
Clone:	RB55989
Isotype:	Ig Fraction
Predicted Reactivity:	Ha, M, Pig, Rat, B, Pr, C, E
Purification:	This antibody is purified through a protein A column, followed by peptide affinity purification.

## Target Details

Target:	alpha Tubulin (TUBA1)
Alternative Name:	alpha Tubulin ( <a href="#">TUBA1 Products</a> )

## Target Details

Background:	Tubulin is the major constituent of microtubules. It binds two moles of GTP, one at an exchangeable site on the beta chain and one at a non-exchangeable site on the alpha chain.
Molecular Weight:	50152
UniProt:	<a href="#">P68363</a>
Pathways:	<a href="#">Microtubule Dynamics</a>

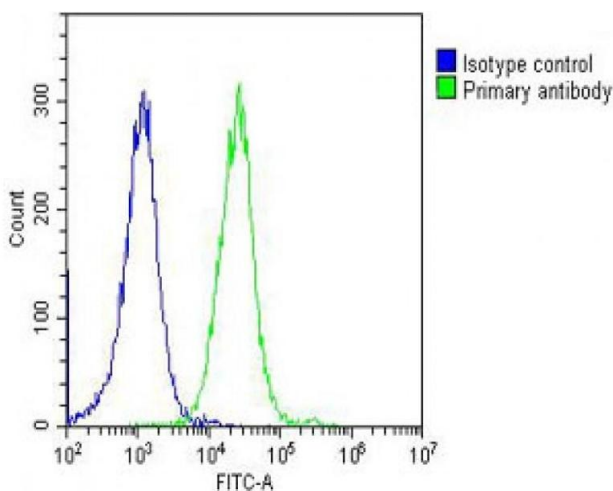
## Application Details

Application Notes:	IF: 1:25. WB: 1:2000. FC: 1:25
Restrictions:	For Research Use only

## Handling

Format:	Liquid
Buffer:	Purified polyclonal antibody supplied in PBS with 0.09 % (W/V) sodium azide.
Preservative:	Sodium azide
Precaution of Use:	This product contains Sodium azide: a POISONOUS AND HAZARDOUS SUBSTANCE which should be handled by trained staff only.
Storage:	4 °C, -20 °C
Expiry Date:	6 months

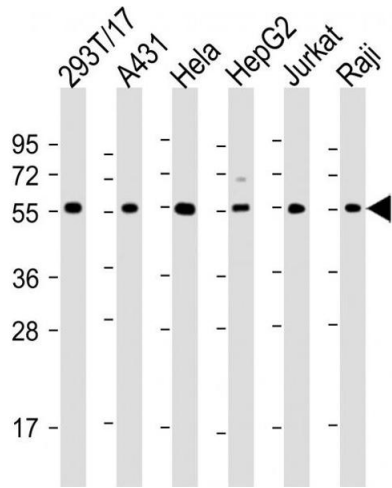
## Images



### Flow Cytometry

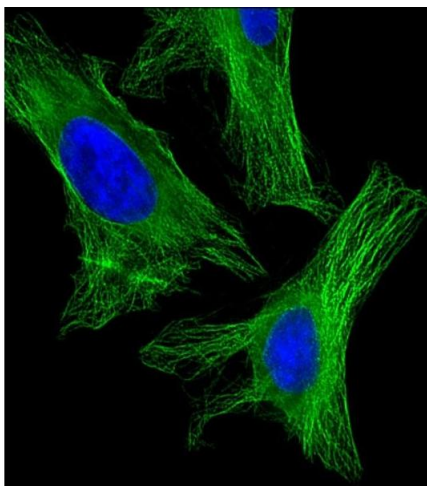
**Image 1.** Overlay histogram showing HeLa cells stained with (ABIN6244301 and ABIN6578675) (green line). The cells were fixed with 2 % paraformaldehyde (10 min) and then permeabilized with 90 % methanol for 10 min. The cells were then incubated in 2 % bovine serum albumin to block non-specific protein-protein interactions followed by the antibody ((ABIN6244301 and ABIN6578675), 1:25 dilution) for 60 min at 37 °C. The secondary antibody used was Goat-Anti-Rabbit IgG, DyLight® 488 Conjugated Highly Cross-

Adsorbed(OH191631) at 1/200 dilution for 40 min at 37 °C. Isotype control antibody (blue line) was rabbit IgG (1 µg/1x10<sup>6</sup> cells) used under the same conditions. Acquisition of >10,000 events was performed.



### Western Blotting

**Image 2.** All lanes : Anti-alpha Tubulin Antibody at 1:2000 dilution Lane 1: 293T/17 whole cell lysate Lane 2: A431 whole cell lysate Lane 3: HeLa whole cell lysate Lane 4: HepG2 whole cell lysate Lane 5: Jurkat whole cell lysate Lane 6: Raji whole cell lysate Lysates/proteins at 20 µg per lane. Secondary Goat Anti-Rabbit IgG, (H+L), Peroxidase conjugated at 1/10000 dilution. Predicted band size : 50 kDa Blocking/Dilution buffer: 5 % NFDN/TBST.



### Immunofluorescence

**Image 3.** Immunofluorescent analysis of 4 % paraformaldehyde-fixed, 0.1 % Triton X-100 permeabilized HeLa (human cervical epithelial adenocarcinoma cell line) cells labeling alpha Tubulin with (ABIN6244301 and ABIN6578675) at 1/25 dilution, followed by Dylight® 488-conjugated goat anti-rabbit IgG (NK179883) secondary antibody at 1/200 dilution (green). Immunofluorescence image showing cytoplasm staining on HeLa cell line. The nuclear counter stain is DI (blue).