

Datasheet for ABIN6244328  
**anti-STPG1 antibody (C-Term)**[Go to Product page](#)

## 1 Image

## Overview

Quantity:	400 µL
Target:	STPG1
Binding Specificity:	AA 238-272, C-Term
Reactivity:	Human
Host:	Rabbit
Clonality:	Polyclonal
Conjugate:	This STPG1 antibody is un-conjugated
Application:	Western Blotting (WB)

## Product Details

Immunogen:	This C1orf201 antibody is generated from a rabbit immunized with a KLH conjugated synthetic peptide between 238-272 amino acids from the C-terminal region of human C1orf201.
Clone:	RB49873
Isotype:	Ig Fraction
Purification:	This antibody is purified through a protein A column, followed by peptide affinity purification.

## Target Details

Target:	STPG1
Alternative Name:	C1orf201 ( <a href="#">STPG1 Products</a> )
Background:	May positively contribute to the induction of apoptosis triggered by O(6)-methylguanine.

## Target Details

Molecular Weight: 36786

UniProt: [Q5TH74](#)

## Application Details

Application Notes: WB: 1:1000

Restrictions: For Research Use only

## Handling

Format: Liquid

Buffer: Purified polyclonal antibody supplied in PBS with 0.09 % (W/V) sodium azide.

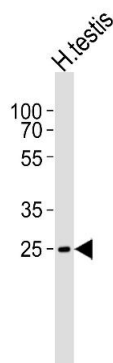
Preservative: Sodium azide

Precaution of Use: This product contains Sodium azide: a POISONOUS AND HAZARDOUS SUBSTANCE which should be handled by trained staff only.

Storage: 4 °C, -20 °C

Expiry Date: 6 months

## Images



### Western Blotting

**Image 1.** Western blot analysis of lysate from human testis tissue lysate, using C1orf201 Antibody (C-term) (ABIN6244328 and ABIN6577534). (ABIN6244328 and ABIN6577534) was diluted at 1:1000. A goat anti-rabbit IgG H&L(HRP) at 1:5000 dilution was used as the secondary antibody. Lysate at 35 µg.