



[Go to Product page](#)

Datasheet for ABIN6244332

anti-S1-Tag antibody

1 Image

Overview

Quantity:	200 µL
Target:	S1-Tag
Reactivity:	Please inquire
Host:	Rabbit
Clonality:	Polyclonal
Conjugate:	This S1-Tag antibody is un-conjugated
Application:	Western Blotting (WB)

Product Details

Immunogen:	Antigen Type: Recombinant Protein Target/Specificity: This S1 tag antibody is generated from a rabbit immunized with a KLH conjugated synthetic peptide of S1 tag.
Clone:	RB55945
Isotype:	Ig Fraction
Purification:	This antibody is purified through a protein A column, followed by peptide affinity purification..

Target Details

Target:	S1-Tag
Alternative Name:	S1 tag (S1-Tag Products)
Target Type:	Tag

Application Details

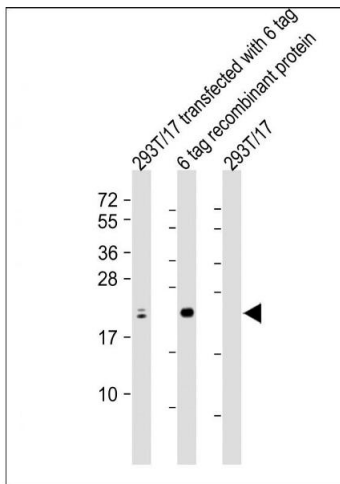
Application Notes: Optimal working dilution should be determined by the investigator.

Restrictions: For Research Use only

Handling

Format: Liquid

Images



Western Blotting

Image 1. All lanes : Anti-S1 tag Antibody Antibody at 1:2000 dilution Lane 1: 293T/17 transfected with 6 tag lysate Lane 2: 6 tag recombinant protein lysate Lane 3: 293T/17 whole cell lysate Lysates/proteins at 20 µg per lane. Secondary Goat Anti-Rabbit IgG, (H+L), Peroxidase conjugated at 1/10000 dilution. Predicted band size : 24 kDa Blocking/Dilution buffer: 5 % NFDN/TBST.