

Datasheet for ABIN6245707
anti-KIR2DL4/CD158d antibody



[Go to Product page](#)

1 Image

Overview

Quantity:	100 µL
Target:	KIR2DL4/CD158d (KIR2DL4)
Reactivity:	Human
Host:	Mouse
Clonality:	Monoclonal
Conjugate:	This KIR2DL4/CD158d antibody is un-conjugated
Application:	Western Blotting (WB), ELISA

Product Details

Immunogen:	Recombinant human KIR2DL4 purified from E. coli. Type of Immunogen: Recombinant protein
Clone:	2H6
Isotype:	IgG2b
Purification:	Protein A purified

Target Details

Target:	KIR2DL4/CD158d (KIR2DL4)
Alternative Name:	KIR2DL4 (KIR2DL4 Products)
Background:	Name/Gene ID: KIR2DL4 Family: Immunoglobulin

Target Details

Synonyms: KIR2DL4, 103AS, 15.212, CD158D, G9P, KIR103, KIR-103AS, NK cell receptor, CD158d antigen, Killer Ig receptor, KIR103AS

Gene ID: 3805

UniProt: [Q99706](#)

Application Details

Application Notes: Approved: ELISA, WB (1:500 - 1:2000)

Usage: The antibody has been tested by ELISA and Western blot analysis to assure specificity and reactivity. Since application varies, however, each investigation should titrate the reagent to obtain optimal results. Recommended dilution range for Western blot analysis is 1:500-1:2000.

Not recommended for: IHC-P

Comment: Target Species of Antibody: Human

Restrictions: For Research Use only

Handling

Format: Liquid

Concentration: Lot specific

Buffer: PBS, pH 7.4, 0.1 % sodium azide

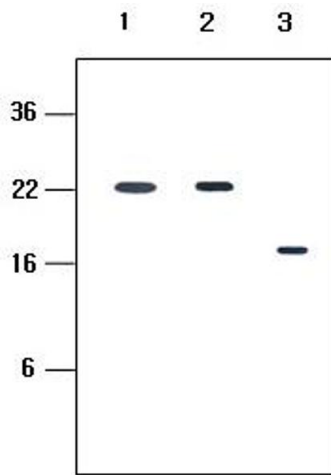
Preservative: Sodium azide

Precaution of Use: This product contains Sodium azide: a POISONOUS AND HAZARDOUS SUBSTANCE which should be handled by trained staff only.

Handling Advice: Avoid freeze-thaw cycles.

Storage: 4 °C, -20 °C

Storage Comment: Short term: 4°C. Long term: Store at -20°C. Avoid freeze-thaw cycles.



Western Blotting

Image 1.