

Datasheet for ABIN625221  
**EGFR ELISA Kit**

## 6 Images

[Go to Product page](#)

## Overview

|                      |                |
|----------------------|----------------|
| Quantity:            | 96 tests       |
| Target:              | EGFR           |
| Binding Specificity: | pSer1070       |
| Reactivity:          | Human          |
| Method Type:         | Sandwich ELISA |
| Application:         | ELISA          |

## Product Details

|                    |                                                                                                                                                                                                                                                                           |
|--------------------|---------------------------------------------------------------------------------------------------------------------------------------------------------------------------------------------------------------------------------------------------------------------------|
| Purpose:           | Human Phospho-EGFR (S1070) ELISA Kit. This assay semi-quantitatively measures phosphorylated EGFR (Ser1070) in lysate samples.                                                                                                                                            |
| Sample Type:       | Cell Lysate, Tissue Lysate                                                                                                                                                                                                                                                |
| Analytical Method: | Semi-Quantitative                                                                                                                                                                                                                                                         |
| Detection Method:  | Colorimetric                                                                                                                                                                                                                                                              |
| Specificity:       | The antibody pair provided in this kit recognizes human Phospho-EGFR (pSer1070).                                                                                                                                                                                          |
| Characteristics:   | <ul style="list-style-type: none"><li>• Rapidly measure phosphorylated protein in lysates</li><li>• Screen numerous different cell lysates without performing a Western Blot analysis</li><li>• Minimal hands-on time, convenient, and non-radioactive material</li></ul> |
| Components:        | <ul style="list-style-type: none"><li>• Pre-Coated 96-well Strip Microplate</li><li>• Wash Buffer</li><li>• Anti-Phospho Antibody</li><li>• HRP-Conjugated Secondary Antibody</li></ul>                                                                                   |

## Product Details

- Assay Diluent
- TMB One-Step Substrate
- Stop Solution
- Lysis Buffer
- Positive Control Sample

|                        |                                                                                                                                                                                                                                                                                                                                                                                                                                                                |
|------------------------|----------------------------------------------------------------------------------------------------------------------------------------------------------------------------------------------------------------------------------------------------------------------------------------------------------------------------------------------------------------------------------------------------------------------------------------------------------------|
| Material not included: | <ul style="list-style-type: none"><li>• Distilled or deionized water</li><li>• 100 mL and 1 liter graduated cylinders</li><li>• Tubes to prepare sample dilutions</li><li>• Protease and Phosphatase inhibitors</li><li>• Precision pipettes to deliver 2 µL to 1 mL volumes</li><li>• Adjustable 1-25 mL pipettes for reagent preparation</li><li>• Benchtop rocker or shaker</li><li>• Microplate reader capable of measuring absorbance at 450 nm</li></ul> |
|------------------------|----------------------------------------------------------------------------------------------------------------------------------------------------------------------------------------------------------------------------------------------------------------------------------------------------------------------------------------------------------------------------------------------------------------------------------------------------------------|

## Target Details

|                   |                                                                                                                                                                                                                                                                                                                                                                                                                                                                                                                                                                 |
|-------------------|-----------------------------------------------------------------------------------------------------------------------------------------------------------------------------------------------------------------------------------------------------------------------------------------------------------------------------------------------------------------------------------------------------------------------------------------------------------------------------------------------------------------------------------------------------------------|
| Target:           | EGFR                                                                                                                                                                                                                                                                                                                                                                                                                                                                                                                                                            |
| Alternative Name: | EGFR ( <a href="#">EGFR Products</a> )                                                                                                                                                                                                                                                                                                                                                                                                                                                                                                                          |
| Background:       | EGFR-S1070                                                                                                                                                                                                                                                                                                                                                                                                                                                                                                                                                      |
| Gene ID:          | 3236                                                                                                                                                                                                                                                                                                                                                                                                                                                                                                                                                            |
| UniProt:          | <a href="#">P00533</a>                                                                                                                                                                                                                                                                                                                                                                                                                                                                                                                                          |
| Pathways:         | <a href="#">NF-kappaB Signaling</a> , <a href="#">RTK Signaling</a> , <a href="#">Fc-epsilon Receptor Signaling Pathway</a> , <a href="#">EGFR Signaling Pathway</a> , <a href="#">Neurotrophin Signaling Pathway</a> , <a href="#">Stem Cell Maintenance</a> , <a href="#">Hepatitis C</a> , <a href="#">Positive Regulation of Response to DNA Damage Stimulus</a> , <a href="#">Interaction of EGFR with phospholipase C-gamma</a> , <a href="#">Thromboxane A2 Receptor Signaling</a> , <a href="#">EGFR Downregulation</a> , <a href="#">S100 Proteins</a> |

## Application Details

|                |                                                                                                                                                                                                                                                                                                                                                                                                        |
|----------------|--------------------------------------------------------------------------------------------------------------------------------------------------------------------------------------------------------------------------------------------------------------------------------------------------------------------------------------------------------------------------------------------------------|
| Sample Volume: | 100 µL                                                                                                                                                                                                                                                                                                                                                                                                 |
| Plate:         | Pre-coated                                                                                                                                                                                                                                                                                                                                                                                             |
| Protocol:      | <ol style="list-style-type: none"><li>1. Prepare all reagents and samples as instructed in the manual.</li><li>2. Add 100 µL of sample or positive control to each well.</li><li>3. Incubate 2.5 h at RT or O/N at 4 °C.</li><li>4. Add 100 µL of prepared primary antibody to each well.</li><li>5. Incubate 1 h at RT.</li><li>6. Add 100 µL of prepared 1X HRP-Streptavidin to each well.</li></ol> |

7. Incubate 1 h at RT.
8. Add 100 µL of TMB One-Step Substrate Reagent to each well.
9. Incubate 30 min at RT.
10. Add 50 µL of Stop Solution to each well.
11. Read at 450 nm immediately.

---

### Reagent Preparation:

1. Bring all reagents and samples to room temperature (18 - 25 °C) before use.
2. Item E, Assay Diluent should be diluted 5-fold with deionized or distilled water before use.
3. Preparation of Positive Add 800 µL 1x Assay Diluent (Item E, Assay Diluent should be diluted 5-fold with deionized or distilled water before use) into Item K vial to prepare a Positive Control (P-1) Solution (See i. Positive control of part IX. for a typical result). Dissolve the powder thoroughly by a gentle mix (it can be removed by centrifuge if any precipitate in the solution is found). Pipette 300 µL 1x Assay Diluent into each tube. Use the Positive Control (1) to produce a dilution series (shown below). Mix each tube thoroughly before the next transfer. 1x Assay Diluent serves as the background. Phospho-EGFR (Ser 1070) ELISA Kit Protocol 6
4. If the Wash Concentrate (20x) (Item B) contains visible crystals, warm to room temperature and mix gently until dissolved. Dilute 20 mL of Wash Buffer Concentrate into deionized or distilled water to yield 400 mL of 1x Wash Buffer.
5. Briefly spin the anti-phospho-EGFR (Ser 1070) (Item C) before use. Pipette up and down to mix gently. The anti-phospho-EGFR (Ser 1070) should be diluted 2,000-fold with 1x Assay Diluent. For example, add 2 µL anti-phospho-EGFR (Tyr 1086) into a tube with 4.0 mL 1x Assay Diluent to prepare a 2,000-fold diluted antibody.
6. Briefly spin the HRP-conjugated anti-rabbit IgG (Item D-1) before use. Pipette up and down to mix gently. HRP-conjugated anti-rabbit IgG concentrate should be diluted 1,000-fold with 1x Assay Diluent. For example: Briefly spin the vial (Item D) and pipette up and down to mix gently. Add 5 µL of HRP-conjugated anti-rabbit IgG concentrate into a tube with 5.0 mL 1x Assay Diluent to prepare a 1,000-fold diluted HRP-conjugated 150 µL Positive Control, Item K vial + 800 µL 1x Assay Diluent 150 µL 150 µL 150 µL P-1 P-2 P-3 P-4 P-5 0 Phospho-EGFR (Ser 1070) ELISA Kit Protocol 7 anti-rabbit IgG solution.
7. Cell Lysate Buffer should be diluted 2-folds with deionized or distilled water before use (recommend to add protease and phosphatase inhibitors). VII.

---

### Sample Preparation:

Cell lysates - Rinse cells with PBS, making sure to remove any remaining PBS before adding the Cell Lysate Buffer. Solubilize cells at  $4 \times 10^7$  cells/mL in 1x Cell Lysate Buffer (we recommend adding protease and phosphatase inhibitors to Cell Lysate Buffer prior to sample preparation). Pipette up and down to resuspend and incubate the lysates with shaking at 2 - 8° C for 30 minutes. Microcentrifuge at 13,000 rpm for 10 minutes at 2 - 8° C, and transfer the supernates

---

into a clean test tube. Lysates should be used immediately or aliquoted and stored at -70 °C. Avoid repeated freeze-thaw cycles. Thawed lysates should be kept on ice prior to use. For the initial experiment, we recommend to do a serial dilution testing such as 10-fold and 100-fold dilution for your cell lysates with Assay Diluent (Item E) before use. Phospho-EGFR (Ser 1070) ELISA Kit Protocol 5

Note: The fold dilution of sample used depends on the abundance of phosphorylated proteins and should be determined empirically. More of the sample can be used if signals are too weak. If signals are too strong, the sample can be diluted further.

Cell Lysate Buffer should be diluted 2-fold with deionized or distilled water before use (recommend to add protease and phosphatase inhibitors).

---

### Assay Procedure:

1. Bring all reagents to room temperature (18 - 25 °C) before use. It is recommended that all samples or Positive Control should be run at least in duplicate.
2. Add 100 µL of each sample or positive control into appropriate wells. Cover well with plate holder and incubate for 2.5 hours at room temperature or over night at 4 °C with shaking.
3. Discard the solution and wash 4 times with 1x Wash Solution. Wash by filling each well with Wash Buffer (300 µL) using a multi-channel Pipette or autowasher. Complete removal of liquid at each step is essential to good performance. After the last wash, remove any remaining Wash Buffer by aspirating or decanting. Invert the plate and blot it against clean paper towels.
4. Add 100 µL of prepared 1X primary antibody, Anti-phospho- EGFR (Ser 1070) (Reagent Preparation step 5) to each well. Incubate for 1.5 hour at room temperature with shaking.
5. Discard the solution. Repeat the wash as in step3. Phospho-EGFR (Ser 1070) ELISA Kit Protocol 8
6. Add 100 µL of prepared 1X secondary antibody solution (see Reagent Preparation step 7) to each well. Incubate for 1 hour at room temperature with shaking.
7. Discard the solution. Repeat the wash as in step3.
8. Add 100 µL of TMB One-Step Substrate Reagent (Item H) to each well. Incubate for 30 minutes at room temperature in the dark with shaking.
9. Add 50 µL of Stop Solution (Item I) to each well. Read at 450 nm immediately.

---

### Calculation of Results:

ELISA data analysis: Average the duplicate readings for each sample or positive control then subtract the average blank optical density.

i. Positive Control A431 cells were treated with recombinant human EGF at 37 °C for 20 min. Solubilize cells at 4 x 10<sup>7</sup> cells/mL in Cell Lysate Buffer. Serial dilutions of lysates were analyzed in this ELISA. Please see step 3 of Part VI Reagent Preparation for detail. Assay Diluent O D = 4 5 0 n m 0.01 0.1 1 10 Positive control dilution series P-1 P-2 P-3 P-4 P-5 Phospho-EGFR (Ser 1070) ELISA Kit Protocol 10

Application Details

ii. Recombinant Human EGF Stimulation of A431 Cell Lines A431 cells were treated or untreated with 100 ng/mL recombinant human EGF for 10 min. Cell lysates were analyzed using this phosphoELISA and Western Blot. ELISA Phospho-EGFR (Ser1070) EGFR O D =4 50 n m 0.0 0.5 1.0 1.5 2.0 2.5 3.0 3.5 4.0 Untreated A431 EGF treated A431 Western-Blot hEGF 0 10 0 10 (Min) Anti-phospho-EGFR Anti-EGFR (Ser1070) Phospho-EGFR (Ser 1070) ELISA Kit Protocol 11

iii. SENSITIVITY The A431 cells were treated with 100 ng/mL recombinant human EGF for 20 minutes to induce phosphorylation of EGF R. Serial dilutions of lysates were analyzed in this ELISA and by Western blot. Immunoblots were incubated with anti-phospho-EGFR (Ser 1070). ELISA Western-Blot 50 25 12.5 6.25 3.13 1.56 0.78 0.39 0.2 0 (µg) 1 0.2 0.04 0.008 0.0016 0 ( µg ) O D =4 50 n m 0.0 0.5 1.0 1.5 2.0 2.5 3.0 3.5 Phospho-EGFR (Ser 1070) ELISA Kit Protocol 12 X

Restrictions: For Research Use only

Handling

Handling Advice: Avoid repeated freeze- thaw cycles.

Storage: -20 °C

Storage Comment: Upon receipt, the kit should be stored at -20 °C. Please use within 6 months from the date of shipment. After initial use, Wash Buffer Concentrate (Item B), Assay Diluent (Item E), TMB One-Step Substrate Reagent (Item H), HRP-Streptavidin (Item G), Stop Solution (Item I) and Cell Lysate Buffer (Item J) should be stored at 4 °C to avoid repeated freeze-thaw cycles. Return unused wells to the pouch containing desiccant pack, reseal along entire edge and store at -20 °C. Reconstituted Positive Control (Item K) should be stored at -70 °C.

Expiry Date: 6 months

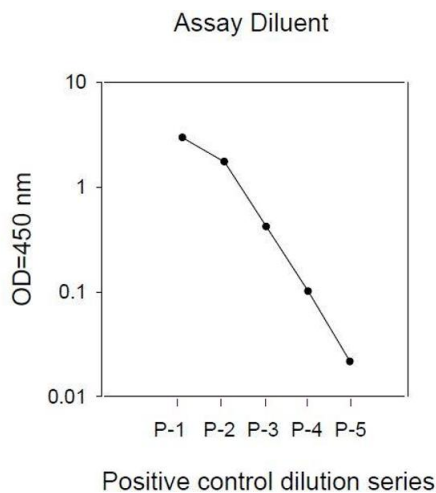


Image 1.

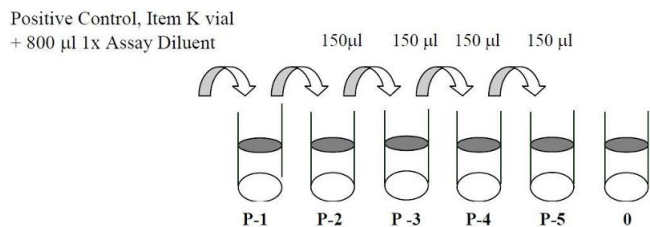


Image 2. This picture shows the preparation of the positive control.

ELISA

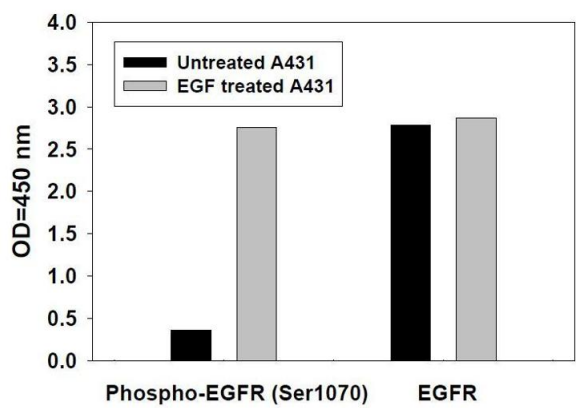


Image 3.

Please check the [product details page](#) for more images. Overall 6 images are available for ABIN625221.