

Datasheet for ABIN625253

ADAM17 ELISA Kit[1 Image](#)[1 Publication](#)[Go to Product page](#)

Overview

Quantity:	96 tests
Target:	ADAM17
Reactivity:	Human
Method Type:	Sandwich ELISA
Detection Range:	70-5000 pg/mL
Minimum Detection Limit:	70 pg/mL
Application:	ELISA

Product Details

Purpose:	Human TACE ELISA Kit for cell culture supernatants, plasma, and serum samples.
Sample Type:	Plasma, Cell Culture Supernatant, Serum
Analytical Method:	Quantitative
Detection Method:	Colorimetric
Specificity:	Cross Reactivity: This ELISA kit shows no cross-reactivity with the following cytokines tested: human Angiogenin, BDNF, BLC, CNTF, ENA-78, FGF-4, IL-1 alpha, IL-1 beta, IL-2, IL-3, IL-4, IL-5, IL-6, IL-7, IL-8, IL-9, IL-11, IL-12 p70, IL-12 p40, IL-13, IL-15, I-309, IP-10, FGF-4, FGF-6, FGF-7, G-CSF, GDNF, GM-CSF, IFN-gamma, IGFBP-2, IGFBP-3, IGFBP-4, Leptin (OB), MCP-1, MCP-2, MCP-3, MDC, MIF, MIG, MIP-1 alpha, MIP-1 beta, MIP-1 delta, PARC, PDGF, RANTES, SCF, SDF-1 alpha, TARC, TGF-beta, TIMP-1, TIMP-2, TNF-alpha, TNF-beta, TPO, VEGF.
Sensitivity:	70 pg/mL

Product Details

- Characteristics:
- Strip plates and additional reagents allow for use in multiple experiments
 - Quantitative protein detection
 - Establishes normal range
 - The best products for confirmation of antibody array data

- Components:
- Pre-Coated 96-well Strip Microplate
 - Wash Buffer
 - Stop Solution
 - Assay Diluent(s)
 - Lyophilized Standard
 - Biotinylated Detection Antibody
 - Streptavidin-Conjugated HRP
 - TMB One-Step Substrate

- Material not included:
- Distilled or deionized water
 - Precision pipettes to deliver 2 μ L to 1 μ L volumes
 - Adjustable 1-25 μ L pipettes for reagent preparation
 - 100 μ L and 1 liter graduated cylinders
 - Tubes to prepare standard and sample dilutions
 - Absorbent paper
 - Microplate reader capable of measuring absorbance at 450nm
 - Log-log graph paper or computer and software for ELISA data analysis

Target Details

Target: ADAM17

Alternative Name: TACE ([ADAM17 Products](#))

Background: The Human TACE (TNF-alpha converting enzyme) ELISA (Enzyme-Linked Immunosorbent Assay) kit is an in vitro enzyme-linked immunosorbent assay for the quantitative measurement of human TACE in serum, plasma, cell culture supernatants and urine. This assay employs an antibody specific for human TACE coated on a 96-well plate. Standards and samples are pipetted into the wells and TACE present in a sample is bound to the wells by the immobilized antibody. The wells are washed and biotinylated anti-human TACE antibody is added. After washing away unbound biotinylated antibody, HRP-conjugated streptavidin is pipetted to the wells. The wells are again washed, a TMB substrate solution is added to the wells and color develops in proportion to the amount of TACE bound. The Stop Solution changes the color from blue to yellow, and the intensity of the color is measured at 450 nm. Reproducibility: Intra-Assay: CV<10% Inter-Assay: CV<12%.

Gene ID: 6868

Target Details

UniProt: [P78536](#)

Pathways: [Notch Signaling](#), [EGFR Signaling Pathway](#), [Neurotrophin Signaling Pathway](#), [Response to Growth Hormone Stimulus](#)

Application Details

Application Notes: Recommended Dilution for serum and plasma samples 2 fold

Sample Volume: 100 µL

Plate: Pre-coated

Protocol:

1. Prepare all reagents, samples and standards as instructed in the manual.
2. Add 100 µL of standard or sample to each well.
3. Incubate 2.5 h at RT or O/N at 4 °C.
4. Add 100 µL of prepared biotin antibody to each well.
5. Incubate 1 h at RT.
6. Add 100 µL of prepared Streptavidin solution to each well.
7. Incubate 45 min at RT.
8. Add 100 µL of TMB One-Step Substrate Reagent to each well.
9. Incubate 30 min at RT.
10. Add 50 µL of Stop Solution to each well.
11. Read at 450 nm immediately.

Reagent Preparation:

1. Bring all reagents and samples to room temperature (18 - 25°C) before use.
2. Sample dilution: If your samples need to be diluted, Assay Diluent C (Item L) is used for dilution of serum/plasma/culture supernatants/urine.
3. Assay Diluent B (Item E) should be diluted 5-fold with deionized or distilled water before use.
4. Preparation of standard: Briefly spin the vial of Item C. Add 400 µl Assay Diluent C (Item L) into Item C vial to prepare a 50 ng/ml standard solution. Dissolve the powder thoroughly by a gentle mix. Add 50 µl TACE standard from the vial of Item C, into a tube with 450 µl Assay Diluent C to prepare a 5,000 pg/ml standard solution. Pipette 300 µl Assay Diluent C into each tube. Use the stock standard solution to produce a dilution series (shown below). Mix each tube thoroughly before the next transfer. Gently vortex to mix. Assay Diluent C serves as the zero standard (0 pg/ml).
5. If the Wash Concentrate (20x) (Item B) contains visible crystals, warm to room temperature and mix gently until dissolved. Dilute 20 ml of Wash Buffer Concentrate into deionized or distilled water to yield 400 ml of 1x Wash Buffer.
6. Briefly spin the Detection Antibody vial (Item F) before use. Add 100 µl of 1x Assay Diluent B (Item E) into the vial to prepare a detection antibody concentrate. Pipette up and down to mix gently (the concentrate can be stored at 4°C for 5 days). The detection antibody concentrate should be diluted 80-fold with 1x Assay Diluent B and used in

Application Details

step 4 of Part VI Assay Procedure. 7. Briefly spin the HRP-Streptavidin concentrate vial (Item G) and pipette up and down to mix gently before use. HRP-Streptavidin concentrate should be diluted 10,000-fold with 1x Assay Diluent B (Item E). For example: Briefly spin the vial (Item G) and pipette up and down to mix gently. Add 2 µl of HRP-Streptavidin concentrate into a tube with 198.0 µl 1x Assay Diluent B to prepare a 100-fold diluted HRP-Streptavidin solution (do not store the diluted solution for next day use). Mix through and then pipette 100 µl of prepared 100-fold diluted solution into a tube with 10 ml 1x Assay Diluent B to prepare a final 10,000 fold diluted HRP-Streptavidin solution.

Assay Procedure:

1. Bring all reagents and samples to room temperature (18 - 25°C) before use. It is recommended that all standards and samples be run at least in duplicate. 2. Add 100 µl of each standard (see Reagent Preparation step 2) and sample into appropriate wells. Cover well and incubate for 2.5 hours at room temperature or over night at 4°C with gentle shaking. 3. Discard the solution and wash 4 times with 1x Wash Solution. Wash by filling each well with Wash Buffer (300 µl) using a multi-channel Pipette or autowasher. Complete removal of liquid at each step is essential to good performance. After the last wash, remove any remaining Wash Buffer by aspirating or decanting. Invert the plate and blot it against clean paper towels. 4. Add 100 µl of 1x prepared biotinylated antibody (Reagent Preparation step 6) to each well. Incubate for 1 hour at room temperature with gentle shaking. 5. Discard the solution. Repeat the wash as in step 3. 6. Add 100 µl of prepared Streptavidin solution (see Reagent Preparation step 7) to each well. Incubate for 45 minutes at room temperature with gentle shaking. 7. Discard the solution. Repeat the wash as in step 3. 8. Add 100 µl of TMB One-Step Substrate Reagent (Item H) to each well. Incubate for 30 minutes at room temperature in the dark with gentle shaking. 9. Add 50 µl of Stop Solution (Item I) to each well. Read at 450 nm immediately.

Calculation of Results:

Calculate the mean absorbance for each set of duplicate standards, controls and samples, and subtract the average zero standard optical density. Plot the standard curve on log-log graph paper or using Sigma plot software, with standard concentration on the x-axis and absorbance on the y-axis. Draw the best-fit straight line through the standard points.

Restrictions:

For Research Use only

Handling

Storage:

-20 °C

Storage Comment:

The entire kit may be stored at -20°C for up to 1 year from the date of shipment. Avoid repeated freeze-thaw cycles. The kit may be stored at 4°C for up to 6 months. For extended storage, it is recommended to store at -80°C.

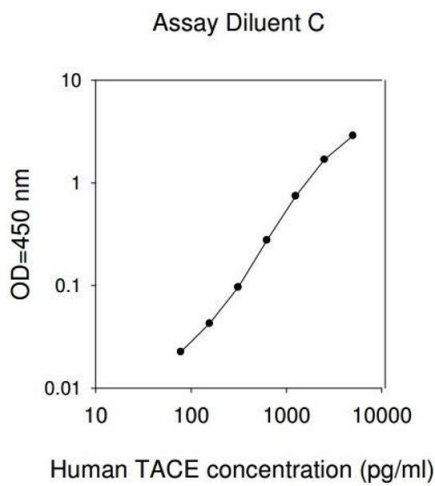
Handling

Expiry Date: 6 months

Publications

Product cited in: Lamas, Rodríguez-Rodríguez, Tornero-Esteban, Villafuertes, Hoyas, Abasolo, Varadé, Alvarez-Lafuente, Urcelay, Fernández-Gutiérrez: "Alternative splicing and proteolytic rupture contribute to the generation of soluble IL-6 receptors (sIL-6R) in rheumatoid arthritis." in: **Cytokine**, Vol. 61, Issue 3, pp. 720-3, (2013) ([PubMed](#)).

Images



ELISA

Image 1.