

## Datasheet for ABIN6252974 **anti-ITGAL antibody (FITC)**



[Go to Product page](#)

### 1 Image

#### Overview

Quantity:	100 tests
Target:	ITGAL
Reactivity:	Human
Host:	Mouse
Clonality:	Monoclonal
Conjugate:	This ITGAL antibody is conjugated to FITC
Application:	Flow Cytometry (FACS)

#### Product Details

Purpose:	CD11a FITC Antibody
Immunogen:	Human HLA-DRCTL line cytolytic Tlymphocytes
Clone:	TS1-22
Isotype:	IgG1, kappa
Characteristics:	<p>The clone recognizes a 170-180 kD alpha chain of a type I transmembrane glycoprotein also known as CD11a or LFA-1a. It is also known as LFA-1a. CD11a non-covalently associates with integrin <math>\beta 2</math> (CD18) to form LFA-1. CD11a is abundantly expressed on all leukocytes, including B and T lymphocytes, monocytes, macrophages, neutrophils, basophils and eosinophils but does not express by the non-hematopoietic tissues and platelets. Up-regulation of CD11a on activated lymphocytes is required to induce their immune response. Absence or reduced CD11a expression on tumor cells helps to escape from regular immune surveillance and it may be one of reason of in vivo tumor generation.</p>

## Product Details

---

Purification: Purified

Purity: >95 %

Grade: GMP Grade

## Target Details

---

Target: ITGAL

Alternative Name: CD11a ([ITGAL Products](#))

UniProt: [P20701](#)

Pathways: [Activated T Cell Proliferation, Integrin Complex](#)

## Application Details

---

Application Notes: Optimal working dilution should be determined by the investigator.

Restrictions: For Research Use only

## Handling

---

Format: Liquid

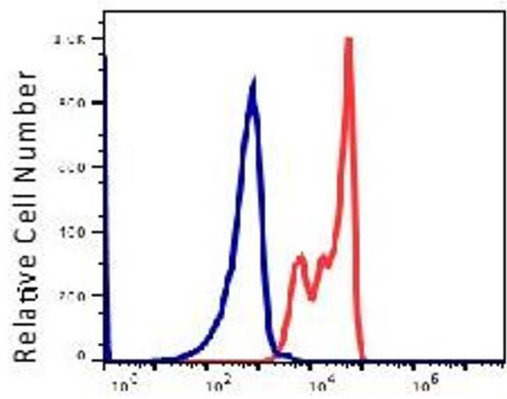
Buffer: PBS pH 7.2, 0.2 % (w/v) BSA, 0.09 % (w/v) sodium azide

Preservative: Sodium azide

Precaution of Use: This product contains Sodium azide: a POISONOUS AND HAZARDOUS SUBSTANCE which should be handled by trained staff only.

Storage: 4 °C

Storage Comment: 2-8°C, Conjugated antibodies should never be frozen.



CD11a FITC, with IgG1 isotype control

## Flow Cytometry

Image 1.