

Datasheet for ABIN6252979
anti-CD2 antibody (mFluor™ 450)



[Go to Product page](#)

1 Image

Overview

Quantity:	100 tests
Target:	CD2
Reactivity:	Human
Host:	Mouse
Clonality:	Monoclonal
Conjugate:	This CD2 antibody is conjugated to mFluor™ 450
Application:	Flow Cytometry (FACS)

Product Details

Purpose:	CD2 mFluor™ 450 Antibody
Immunogen:	Human acute lymphoblastic leukemia cells
Clone:	OKT11
Isotype:	IgG1, kappa
Characteristics:	CD2 is a 50kD type I transmembrane glycoprotein and a member of the immunoglobulin superfamily. It is a specific marker for T lymphocytes, natural killer cells, thymic B cell subsets, and some antigen presenting cells. CD2 interacts with CD58 (LFA-3) and CD48 to mediate cell adhesion and induce co-stimulatory signals in T lymphocytes.
Purification:	Purified
Purity:	>95 %
Grade:	GMP Grade

Target Details

Target:	CD2
Alternative Name:	CD2 (CD2 Products)
NCBI Accession:	NM_001767
UniProt:	P06729

Application Details

Application Notes:	Optimal working dilution should be determined by the investigator.
Restrictions:	For Research Use only

Handling

Format:	Liquid
Buffer:	PBS pH 7.2, 0.2 % (w/v) BSA, 0.09 % (w/v) sodium azide
Preservative:	Sodium azide
Precaution of Use:	This product contains Sodium azide: a POISONOUS AND HAZARDOUS SUBSTANCE which should be handled by trained staff only.
Storage:	4 °C
Storage Comment:	2-8°C, Conjugated antibodies should never be frozen.

Images

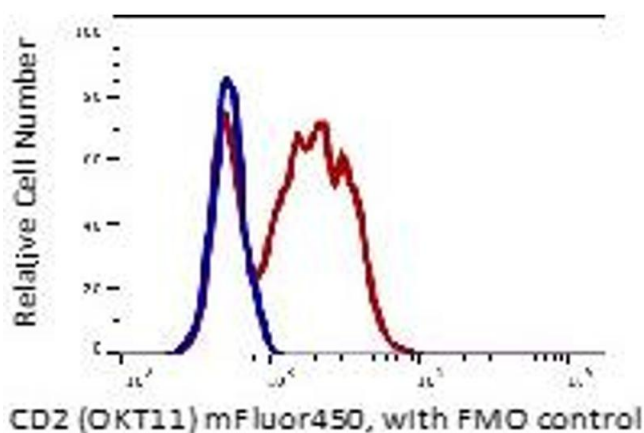


Image 1. Lymphocytes gated blood (RBC lysed) stained with mFluor450 conjugated anti-human CD2 (clone OKT11, red histogram). Lymphocytes gated blood (RBC lysed) stained with FL-6 FMO control (blue histogram). The data were generated in Beckman Coulter CytoFLEX S flowcytometer and analyzed in FlowJo software.