

Datasheet for ABIN6253011 **anti-CD3 antibody (iFluor™700)**



[Go to Product page](#)

1 Image

Overview

Quantity:	100 tests
Target:	CD3
Reactivity:	Human
Host:	Mouse
Clonality:	Monoclonal
Conjugate:	This CD3 antibody is conjugated to iFluor™700
Application:	Flow Cytometry (FACS)

Product Details

Purpose:	CD3 iFluor™ 700 Antibody
Immunogen:	Thymocytes and peripheral blood lymphocytes from a Sézary Syndrome donor
Clone:	UCHT1
Isotype:	IgG1, kappa
Characteristics:	The monoclonal UCHT1 clone recognizes CD3ε antigen, a 20kDa transmembrane cell-surface protein that belongs to the immunoglobulin superfamily. The CD3 complex contains a CD3γ chain, a CD3δ chain, and two CD3ε chains. These chains associate with a molecule known as the T-cell receptor (TCR) and the ζ-chain (zeta-chain) to generate an activation signal in T lymphocytes. CD3ε is expressed on T lymphocytes, NK-T cells, and to varying degrees on developing thymocytes. CD3 plays central roles in TCR signaling, T lymphocyte activation, and antigen recognition. Crosslinking of the TCR via plate bound UCHT1 monoclonal is widely used to study the activation T cell response in vitro.

Product Details

Purification: Purified

Purity: >95 %

Grade: GMP Grade

Target Details

Target: CD3

Alternative Name: CD3 ([CD3 Products](#))

NCBI Accession: [NM_000733](#)

UniProt: [P07766](#)

Pathways: [TCR Signaling, Ubiquitin Proteasome Pathway](#)

Application Details

Application Notes: Optimal working dilution should be determined by the investigator.

Restrictions: For Research Use only

Handling

Format: Liquid

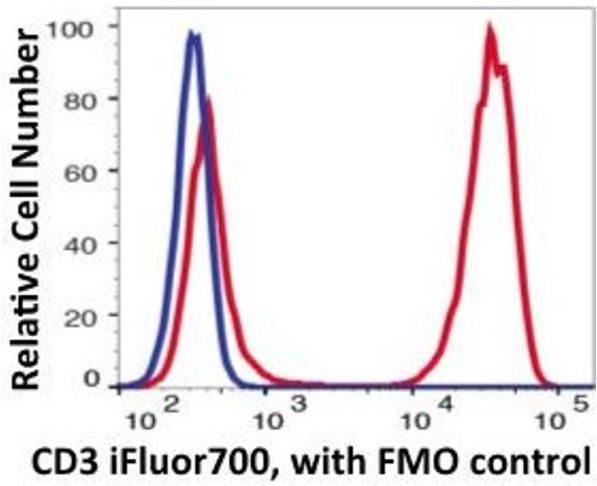
Buffer: PBS pH 7.2, 0.2 % (w/v) BSA, 0.09 % (w/v) sodium azide

Preservative: Sodium azide

Precaution of Use: This product contains Sodium azide: a POISONOUS AND HAZARDOUS SUBSTANCE which should be handled by trained staff only.

Storage: 4 °C

Storage Comment: 2-8°C, Conjugated antibodies should never be frozen.



Flow Cytometry

Image 1.