

Datasheet for ABIN6253038
anti-CD45 antibody (PE-iFluor™594)



[Go to Product page](#)

2 Images

Overview

Quantity:	100 tests
Target:	CD45 (PTPRC)
Reactivity:	Human
Host:	Mouse
Clonality:	Monoclonal
Conjugate:	This CD45 antibody is conjugated to PE-iFluor™594
Application:	Flow Cytometry (FACS)

Product Details

Purpose:	CD45 PE-iFluor594 Antibody
Immunogen:	Human T lymphocytes
Clone:	F10-89-4
Isotype:	IgG2a, kappa
Characteristics:	The clone F10-89-4, a mouse monoclonal antibody, recognizes a hematopoietic cell surface antigen known as CD45 which is present on all human leukocytes including lymphocytes, monocytes, granulocytes, eosinophils, and basophils in peripheral blood. CD45 has a role in signal transduction, modifying signals from other surface molecules. The CD45 antibody has been reported to react weakly with mature circulating erythrocytes and platelets. The antibody recognizes the human leukocyte common antigen which is found on cells from spleen, lymph nodes, 83 % bone marrow cells, and granulocytes. The antigen recognized by F10-89-4 is a glycoprotein with a molecular weight of 190 kDa to 215 kDa.

Product Details

Purification: Purified

Purity: >95 %

Grade: GMP Grade

Target Details

Target: CD45 (PTPRC)

Alternative Name: CD45 ([PTPRC Products](#))

Gene ID: 5788

NCBI Accession: [NM_002838](#)

UniProt: [P08575](#)

Pathways: [TCR Signaling](#), [Regulation of Leukocyte Mediated Immunity](#), [Positive Regulation of Immune Effector Process](#), [Production of Molecular Mediator of Immune Response](#), [CXCR4-mediated Signaling Events](#), [BCR Signaling](#)

Application Details

Application Notes: Optimal working dilution should be determined by the investigator.

Restrictions: For Research Use only

Handling

Format: Liquid

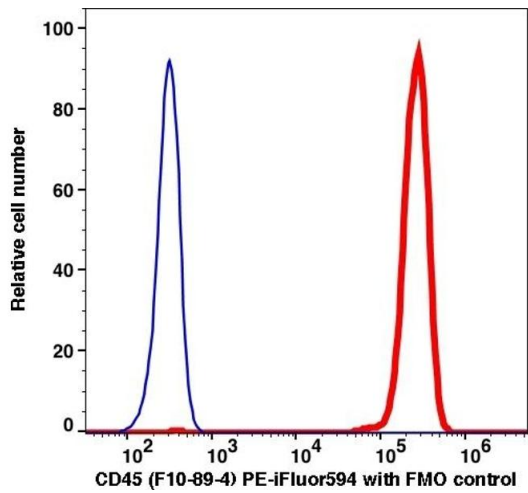
Buffer: PBS pH 7.2, 0.2 % (w/v) BSA, 0.09 % (w/v) sodium azide

Preservative: Sodium azide

Precaution of Use: This product contains Sodium azide: a POISONOUS AND HAZARDOUS SUBSTANCE which should be handled by trained staff only.

Storage: 4 °C

Storage Comment: 2-8°C, Conjugated antibodies should never be frozen.



Flow Cytometry

Image 1.

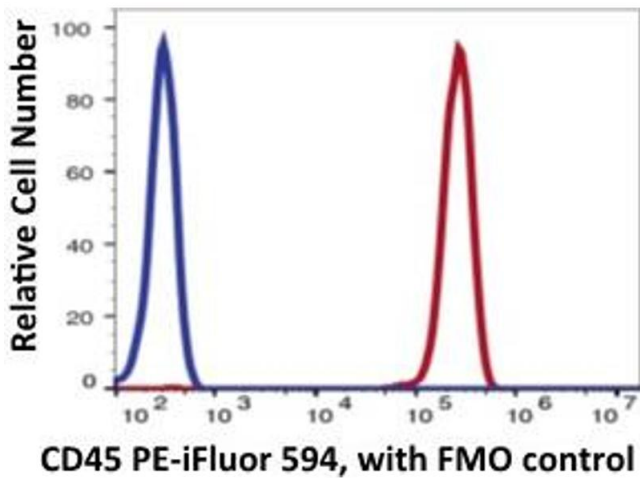


Image 2. Lymphocytes gated PBMCs stained with PE- iFluor 594 conjugated anti-human CD45 (clone F10-89-4, red histogram). Lymphocytes gated fluorescent minus one (FMO) was used as control (blue histogram). The data were generated in Beckman Coulter CytoFLEX S flow cytometer and analyzed in FlowJo Software.