

Datasheet for ABIN6253046

**anti-CD45 antibody (iFluor™700)**[Go to Product page](#)**2** Images

## Overview

|              |  |
|--------------|--|
| Quantity:    | 100 tests                                      |
| Target:      | CD45 (PTPRC)                                   |
| Reactivity:  | Human  |
| Host:        | Mouse  |
| Clonality:   | Monoclonal                                     |
| Conjugate:   | This CD45 antibody is conjugated to iFluor™700 |
| Application: | Flow Cytometry (FACS)                          |

## Product Details

|                  |  |
|------------------|--|
| Immunogen:       | Human T lymphocytes  |
| Clone:           | F10-89-4   |
| Isotype:         | IgG2a kappa  |
| Characteristics: | The clone F10-89-4, a mouse monoclonal antibody, recognizes a hematopoietic cell surface antigen known as CD45 which is present on all human leukocytes including lymphocytes, monocytes, granulocytes, eosinophils, and basophils in peripheral blood. CD45 has a role in signal transduction, modifying signals from other surface molecules. The CD45 antibody has been reported to react weakly with mature circulating erythrocytes and platelets. The antibody recognizes the human leukocyte common antigen which is found on cells from spleen, lymph nodes, 83 % bone marrow cells, and granulocytes. The antigen recognized by F10-89-4 is a glycoprotein with a molecular weight of 190 kDa to 215 kDa. |
| Purification:    | Purified   |

## Product Details

---

Purity: >95 %

Grade: GMP Grade

## Target Details

---

Target: CD45 (PTPRC)

Alternative Name: CD45 ([PTPRC Products](#))

Background: The clone F10-89-4, a mouse monoclonal antibody, recognizes a hematopoietic cell surface antigen known as CD45 which is present on all human leukocytes including lymphocytes, monocytes, granulocytes, eosinophils, and basophils in peripheral blood. CD45 has a role in signal transduction, modifying signals from other surface molecules. The CD45 antibody has been reported to react weakly with mature circulating erythrocytes and platelets. The antibody recognizes the human leukocyte common antigen which is found on cells from spleen, lymph nodes, 83 % bone marrow cells, and granulocytes. The antigen recognized by F10-89-4 is a glycoprotein with a molecular weight of 190 kDa to 215 kDa.

NCBI Accession: [NM\\_002838](#)

UniProt: [P08575](#)

Pathways: [TCR Signaling](#), [Regulation of Leukocyte Mediated Immunity](#), [Positive Regulation of Immune Effector Process](#), [Production of Molecular Mediator of Immune Response](#), [CXCR4-mediated Signaling Events](#), [BCR Signaling](#)

## Application Details

---

Application Notes: Optimal working dilution should be determined by the investigator.

Restrictions: For Research Use only

## Handling

---

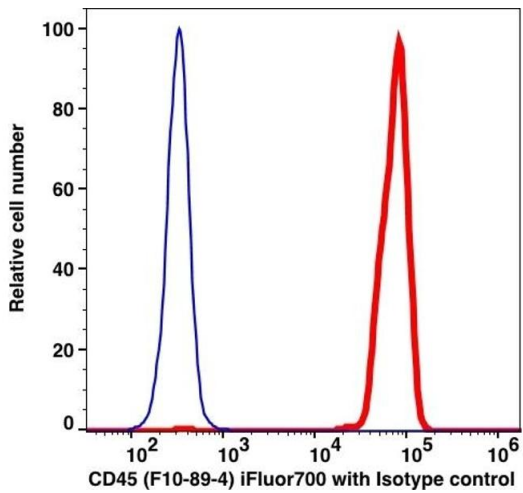
Format: Liquid

Buffer: PBS pH 7.2, 0.2 % (w/v) BSA, 0.09 % (w/v) sodium azide

Preservative: Sodium azide

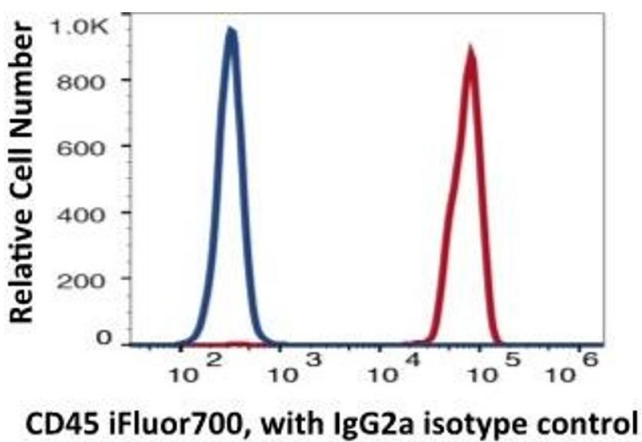
Precaution of Use: This product contains Sodium azide: a POISONOUS AND HAZARDOUS SUBSTANCE which should be handled by trained staff only.

Storage: 4 °C



Flow Cytometry

Image 1.



**Image 2.** Lymphocytes gated healthy volunteer blood stained with mFluor450 conjugated anti-human CD45 (clone F10-89-4, red histogram). Lymphocytes gated healthy volunteer blood stained with mFluor450 conjugated isotype control mouse IgG2a (blue histogram). The data were generated in Beckman Coulter CytoFLEX S flow cytometer and analyzed in FlowJo software.