



[Go to Product page](#)

Datasheet for ABIN6253057
anti-CD45RA antibody

2 Images

Overview

| | |
|--------------|---------------------------------------|
| Quantity: | 100 µg |
| Target: | CD45RA |
| Reactivity: | Human |
| Host: | Mouse |
| Clonality: | Monoclonal |
| Conjugate: | This CD45RA antibody is un-conjugated |
| Application: | Flow Cytometry (FACS) |

Product Details

| | |
|------------------|---|
| Immunogen: | An EBV-transformed B cell line from a patient with MHC class II deficiency |
| Clone: | OTH-74D4 |
| Isotype: | IgG1 kappa |
| Characteristics: | The clone OTH-74D4, a mouse monoclonal antibody, recognizes a 220 kDa cell surface isoform protein known as CD45RA of the leucocyte common antigen (LCA) of the CD45 antigen family. The CD45RA antigen is expressed mostly on naive CD4+, CD8+, $\gamma\delta$ + T, and on most B and NK lymphocytes. Generally, the CD45RA antigen density decreases upon activation. |
| Purification: | Purified |
| Purity: | >95 % |
| Grade: | GMP Grade |

Target Details

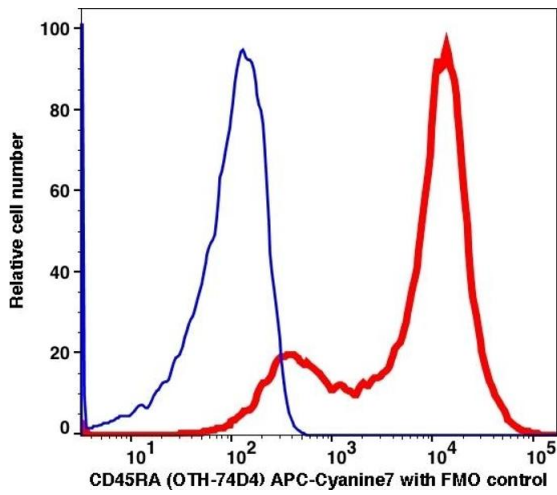
| | |
|-------------------|--|
| Target: | CD45RA |
| Alternative Name: | CD45RA (CD45RA Products) |
| Background: | <p>The clone OTH-74D4, a mouse monoclonal antibody, recognizes a 220 kDa cell surface isoform protein known as CD45RA of the leucocyte common antigen (LCA) of the CD45 antigen family. The CD45RA antigen is expressed mostly on naive CD4+, CD8+, $\gamma\delta$+ T, and on most B and NK lymphocytes. Generally, the CD45RA antigen density decreases upon activation.</p> |
| NCBI Accession: | NM_002838 |
| UniProt: | P08575 |

Application Details

| | |
|--------------------|--|
| Application Notes: | Optimal working dilution should be determined by the investigator. |
| Restrictions: | For Research Use only |

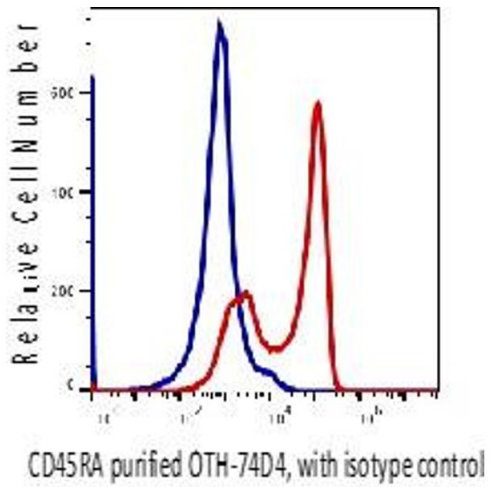
Handling

| | |
|--------------------|--|
| Format: | Liquid |
| Buffer: | PBS pH 7.2, 0.1 % (w/v) BSA, 0.09 % (w/v) sodium azide |
| Preservative: | Sodium azide |
| Precaution of Use: | This product contains Sodium azide: a POISONOUS AND HAZARDOUS SUBSTANCE which should be handled by trained staff only. |
| Storage: | 4 °C |



Flow Cytometry

Image 1.



Flow Cytometry

Image 2.