



[Go to Product page](#)

Datasheet for ABIN6253060
anti-CD45RO antibody (FITC)

1 Image

Overview

Quantity:	100 tests
Target:	CD45RO
Reactivity:	Human
Host:	Mouse
Clonality:	Monoclonal
Conjugate:	This CD45RO antibody is conjugated to FITC
Application:	Flow Cytometry (FACS)

Product Details

Immunogen:	IL-2 dependent T cell line, CA-1
Clone:	UCHL1
Isotype:	IgG2a kappa
Characteristics:	The clone UCHL1 recognizes 180-185 KD surface antigen known as CD45RO commonly expressed by thymocytes, a subset of resting, memory and activated T cells, activated monocytes/macrophages, granulocytes and myeloma cells. CD45RO is the shortest isoform of a receptor-type protein tyrosine phosphatase, CD45 glycoprotein. It plays important rule in development of lymphocytes and antigen signaling, promotes cell survival by modulating integrin-mediated signal transduction pathway and is also involved in DNA fragmentation during apoptosis.
Purification:	Purified
Purity:	>95 %

Product Details

Grade: GMP Grade

Target Details

Target: CD45RO

Alternative Name: CD45RO ([CD45RO Products](#))

Background: The clone UCHL1 recognizes 180-185 KD surface antigen known as CD45RO commonly expressed by thymocytes, a subset of resting, memory and activated T cells, activated monocytes/macrophages, granulocytes and myeloma cells. CD45RO is the shortest isoform of a receptor-type protein tyrosine phosphatase, CD45 glycoprotein. It plays important rule in development of lymphocytes and antigen signaling, promotes cell survival by modulating integrin-mediated signal transduction pathway and is also involved in DNA fragmentation during apoptosis.

Gene ID: 5788

UniProt: [P08575](#)

Application Details

Application Notes: Optimal working dilution should be determined by the investigator.

Restrictions: For Research Use only

Handling

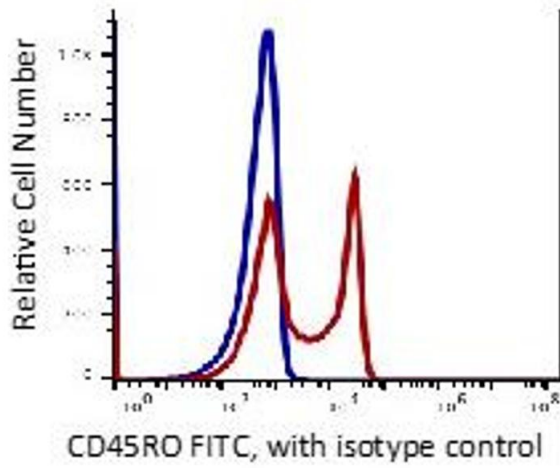
Format: Liquid

Buffer: PBS pH 7.2, 0.2 % (w/v) BSA, 0.09 % (w/v) sodium azide

Preservative: Sodium azide

Precaution of Use: This product contains Sodium azide: a POISONOUS AND HAZARDOUS SUBSTANCE which should be handled by trained staff only.

Storage: 4 °C



Flow Cytometry

Image 1.