

Datasheet for ABIN6253071

**Mouse IgG1 isotype control (iFluor™647)**[Go to Product page](#)**1** Image

## Overview

Quantity:	100 tests
Target:	IgG1
Host:	Mouse
Clonality:	Monoclonal
Conjugate:	iFluor™647
Application:	Flow Cytometry (FACS), Isotype Control (IsoC)

## Product Details

Purpose:	Mouse IgG1, k iFluor™ 647 Antibody
Clone:	MOPC-31C
Isotype:	IgG1, kappa
Characteristics:	The MOPC-31C is a useful for comparative expression analysis including flow cytometry, Western blotting, immunoprecipitation, immunohistochemistry, and immunocytochemistry. The transplantable plasmacytoma MOPC-31C was induced by intraperitoneal injection of mineral oils into BALB/c mice. It was adapted to continuous cell culture by alternate passage in animals.
Purification:	Purified
Purity:	>95 %
Grade:	GMP Grade

Target Details

Target:	IgG1
Alternative Name:	IgG1,kappa (IgG1 Products)
Target Type:	Antibody

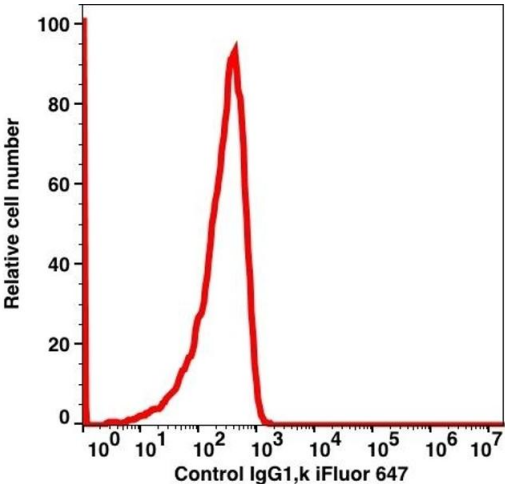
Application Details

Application Notes:	Optimal working dilution should be determined by the investigator.
Restrictions:	For Research Use only

Handling

Format:	Liquid
Buffer:	PBS pH 7.2, 0.2 % (w/v) BSA, 0.09 % (w/v) sodium azide
Preservative:	Sodium azide
Precaution of Use:	This product contains Sodium azide: a POISONOUS AND HAZARDOUS SUBSTANCE which should be handled by trained staff only.
Storage:	4 °C
Storage Comment:	2-8°C, Conjugated antibodies should never be frozen.

Images



Flow Cytometry

Image 1.