

## Datasheet for ABIN6253086 **anti-CD11c antibody**



[Go to Product page](#)

### 1 Image

#### Overview

Quantity:	100 µg
Target:	CD11c (ITGAX)
Reactivity:	Human, Cynomolgus, Baboon, Rhesus Monkey
Host:	Mouse
Clonality:	Monoclonal
Conjugate:	This CD11c antibody is un-conjugated
Application:	Flow Cytometry (FACS)

#### Product Details

Purpose:	CD11c Unconjugated Antibody
Immunogen:	Rheumatoid synovial fluid cells and fibronectin purified human monocytes
Clone:	3-9
Isotype:	IgG1, kappa
Characteristics:	<p>The clone 3.9 recognizes 150 kDa cell surface glycoprotein known as CD11c or Integrin <math>\alpha</math>X. CD11c plays important role in the development of human dendritic cells (DCs) and is widely used to study the immune function of DCs along with staining of CD11b. Besides DCs, CD11c is also widely expressed by tissue macrophages, activated neutrophils/granulocytes, a subset of activated T cells and intestinal intraepithelial lymphocytes.</p>
Purification:	Purified
Purity:	>95 %

## Product Details

Grade: GMP Grade

## Target Details

Target: CD11c (ITGAX)

Alternative Name: CD11c (ITGAX Products)

UniProt: [P20702](#)

Pathways: [Complement System](#), [Activated T Cell Proliferation](#), [Integrin Complex](#)

## Application Details

Application Notes: Optimal working dilution should be determined by the investigator.

Restrictions: For Research Use only

## Handling

Format: Liquid

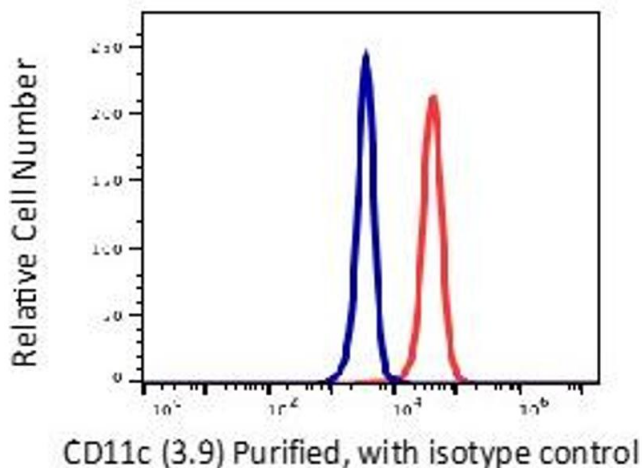
Buffer: PBS pH 7.2, 0.1 % (w/v) BSA, 0.09 % (w/v) sodium azide

Preservative: Sodium azide

Precaution of Use: This product contains Sodium azide: a POISONOUS AND HAZARDOUS SUBSTANCE which should be handled by trained staff only.

Storage: 4 °C

## Images



### Flow Cytometry

Image 1.