

Datasheet for ABIN6253091 **anti-CD14 antibody**



[Go to Product page](#)

1 Image

Overview

Quantity:	100 µg
Target:	CD14
Reactivity:	Human
Host:	Mouse
Clonality:	Monoclonal
Conjugate:	This CD14 antibody is un-conjugated
Application:	Flow Cytometry (FACS)

Product Details

Purpose:	CD14 Unconjugated Antibody
Immunogen:	Full-length human CD14 protein
Clone:	M5E2
Isotype:	IgG2a, kappa
Characteristics:	<p>The clone M5E2, a mouse monoclonal antibody, specifically recognizes a human 53-55 kDa glycosylphosphatidylinositol (GPI)-anchored single chain cell surface antigen known as CD14. The expression of CD14 is commonly observed on monocytes, interfollicular macrophages, reticular dendritic cells and some Langerhans cells. M5E2 binds with a complex of LPS and lipopolysaccharide binding protein, and blockade of CD14 with monoclonal antibodies prevented the synthesis of TNF-alpha by LPS activated leukocytes. M5E2 has crossreactivity with various species including non-human rhesus macaques.</p>
Purification:	Purified

Product Details

Purity: >95 %

Grade: GMP Grade

Target Details

Target: CD14

Alternative Name: CD14 ([CD14 Products](#))

UniProt: [P08571](#)

Pathways: [TLR Signaling](#), [Activation of Innate immune Response](#), [Cellular Response to Molecule of Bacterial Origin](#), [Toll-Like Receptors Cascades](#)

Application Details

Application Notes: Optimal working dilution should be determined by the investigator.

Restrictions: For Research Use only

Handling

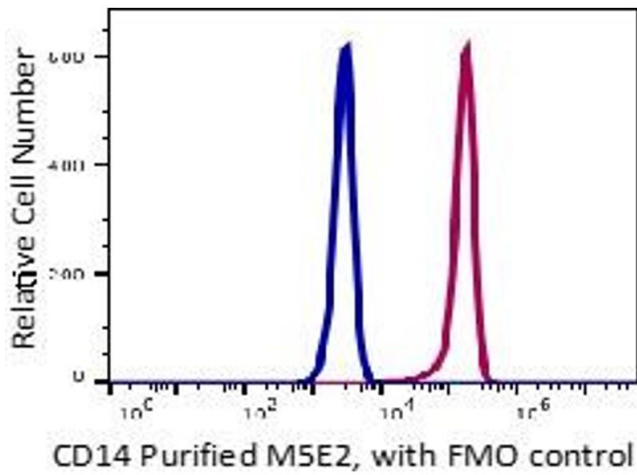
Format: Liquid

Buffer: PBS pH 7.2, 0.1 % (w/v) BSA, 0.09 % (w/v) sodium azide

Preservative: Sodium azide

Precaution of Use: This product contains Sodium azide: a POISONOUS AND HAZARDOUS SUBSTANCE which should be handled by trained staff only.

Storage: 4 °C



Flow Cytometry

Image 1.