

## Datasheet for ABIN6253103 **anti-CD40 antibody (PE)**

### 1 Image



[Go to Product page](#)

### Overview

Quantity:	100 tests
Target:	CD40
Reactivity:	Human, Cynomolgus, Baboon, Rhesus Monkey
Host:	Mouse
Clonality:	Monoclonal
Conjugate:	This CD40 antibody is conjugated to PE
Application:	Flow Cytometry (FACS)

### Product Details

Purpose:	CD40 PE Antibody
Immunogen:	Human tonsillar lymphocytes
Clone:	G28-5
Isotype:	IgG1, kappa
Characteristics:	The clone G28-5 is specific for CD40 B cell surface antigen. It is a 48 kD type I glycoprotein and a member of the tumor necrosis factor receptor superfamily. CD40 is the receptor for CD40 ligand (CD40L), a molecule predominantly expressed by activated CD4+ T cells. The CD40 on B cells and CD40L (CD154) on activated helper T cells are co-stimulatory molecules whose interaction is required for the proliferation and immunoglobulin (Ig) class switching of antigen-activated B cells.
Purification:	Purified
Purity:	>95 %

## Product Details

---

Grade: GMP Grade

## Target Details

---

Target: CD40

Alternative Name: CD40 ([CD40 Products](#))

UniProt: [P25942](#)

Pathways: [NF-kappaB Signaling](#), [Cellular Response to Molecule of Bacterial Origin](#), [M Phase](#), [Regulation of Leukocyte Mediated Immunity](#), [Positive Regulation of Immune Effector Process](#), [Production of Molecular Mediator of Immune Response](#), [Cancer Immune Checkpoints](#)

## Application Details

---

Application Notes: Optimal working dilution should be determined by the investigator.

Restrictions: For Research Use only

## Handling

---

Format: Liquid

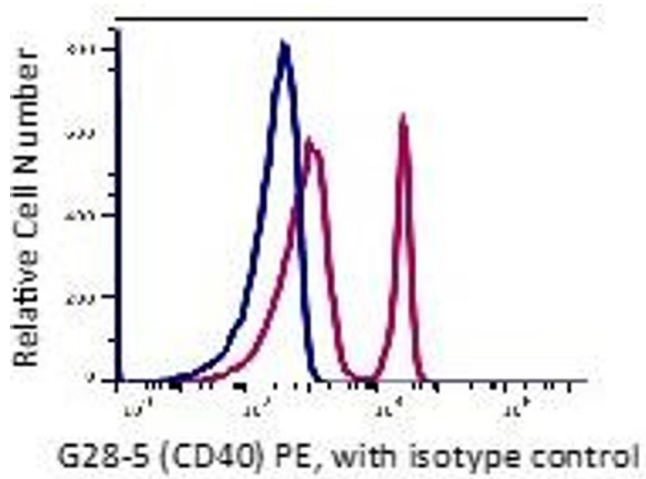
Buffer: PBS pH 7.2, 0.2 % (w/v) BSA, 0.09 % (w/v) sodium azide

Preservative: Sodium azide

Precaution of Use: This product contains Sodium azide: a POISONOUS AND HAZARDOUS SUBSTANCE which should be handled by trained staff only.

Storage: 4 °C

Storage Comment: 2-8°C, Conjugated antibodies should never be frozen.



## Flow Cytometry

Image 1.