

Datasheet for ABIN6253194

Glypican 3 Protein (GPC3) (AA 25-559) (Fc Tag,FITC)**2** Images[Go to Product page](#)

Overview

Quantity:	200 µg
Target:	Glypican 3 (GPC3)
Protein Characteristics:	AA 25-559
Origin:	Human
Source:	HEK-293 Cells
Protein Type:	Recombinant
Purification tag / Conjugate:	This Glypican 3 protein is labelled with Fc Tag,FITC.

Product Details

Sequence:	AA 25-559
Purity:	>90 % as determined by SDS-PAGE.
Endotoxin Level:	Less than 1.0 EU per µg by the LAL method.

Target Details

Target:	Glypican 3 (GPC3)
Alternative Name:	Glypican 3 (GPC3 Products)
Background:	Glypican-3 (GPC3) is also known as Intestinal protein OCI-5, GTR2-2, MXR7, which belongs to the glypican family. Glypican 3 / GPC-3 is highly expressed in lung, liver and kidney. Glypican-3 inhibits the dipeptidyl peptidase activity of DPP4. Glypican-3 may be involved in the suppression/modulation of growth in the predominantly mesodermal tissues and organs, and also may play a role in the modulation of IGF2 interactions with its receptor and thereby

Target Details

	modulate its function.
Molecular Weight:	38.1 kDa and 49.3 kDa
NCBI Accession:	NP_004475
Pathways:	Glycosaminoglycan Metabolic Process

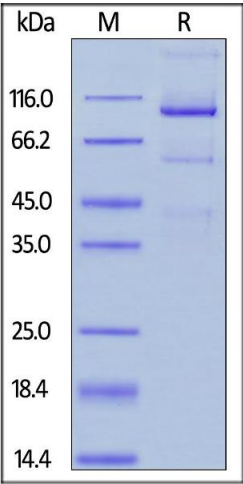
Application Details

Restrictions:	For Research Use only
---------------	-----------------------

Handling

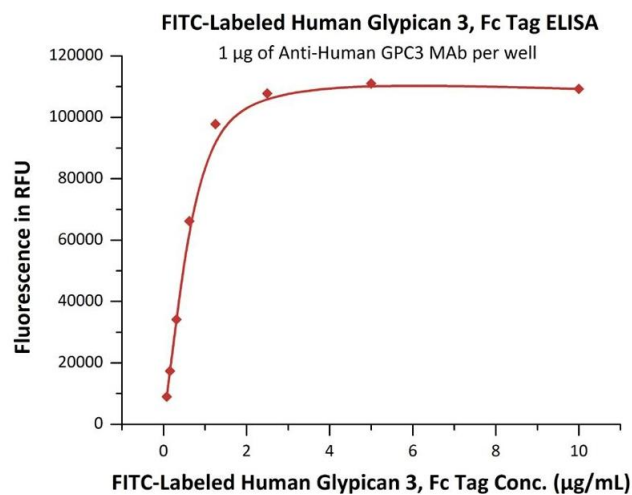
Format:	Lyophilized
Buffer:	PBS, pH 7.4
Handling Advice:	Please avoid repeated freeze-thaw cycles.
Storage:	-20 °C

Images



SDS-PAGE

Image 1. Fed Human Glypican 3, Fc Tag on under reducing (R) condition. The gel was stained overnight with Coomassie Blue. The purity of the protein is greater than 90 % .



ELISA

Image 2. Immobilized A GPC3 MAb at 10 µg/mL (100 µL/well) can bind Fed Human Glypican 3, Fc Tag (ABIN6253194,ABIN6253527) with a linear range of 0.078-1.25 µg/mL (Ex.488 nm/Em.535 nm) (QC tested).