

Datasheet for ABIN6253202

CD22 Protein (AA 20-687) (His tag,FITC)



[Go to Product page](#)

2 Images

Overview

Quantity:	200 µg
Target:	CD22
Protein Characteristics:	AA 20-687
Origin:	Human
Source:	HEK-293 Cells
Protein Type:	Recombinant
Purification tag / Conjugate:	This CD22 protein is labelled with His tag,FITC.

Product Details

Sequence:	AA 20-687
Purity:	>95 % as determined by SDS-PAGE.
Endotoxin Level:	Less than 1.0 EU per µg by the LAL method.

Target Details

Target:	CD22
Alternative Name:	Siglec-2 (CD22 Products)
Background:	B-cell receptor CD22 is also known as Sialic acid-binding Ig-like lectin 2 (Siglec-2), B-lymphocyte cell adhesion molecule (BL-CAM), T-cell surface antigen Leu-14, which belongs to the immunoglobulin superfamily and SIGLEC (sialic acid binding Ig-like lectin) family. CD22 mediates B-cell B-cell interactions, and may be involved in the localization of B-cells in lymphoid tissues. Siglec-2 / CD22 binds sialylated glycoproteins, one of which is CD45. Siglec2 / CD22

Target Details

plays a role in positive regulation through interaction with Src family tyrosine kinases and may also act as an inhibitory receptor by recruiting cytoplasmic phosphatases via their SH2 domains that block signal transduction through dephosphorylation of signaling molecules.

Molecular Weight: 77.0 kDa

NCBI Accession: [NP_001762](#)

Application Details

Restrictions: For Research Use only

Handling

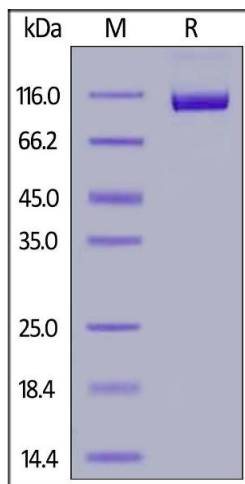
Format: Lyophilized

Buffer: PBS, pH 7.4

Handling Advice: Please avoid repeated freeze-thaw cycles.

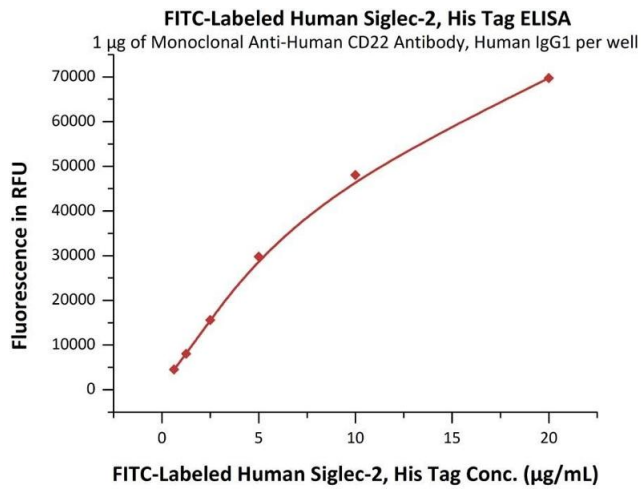
Storage: -20 °C

Images



SDS-PAGE

Image 1. Fed Human Siglec-2, His Tag on under reducing (R) condition. The gel was stained overnight with Coomassie Blue. The purity of the protein is greater than 95 %.



ELISA

Image 2. Immobilized Monoclonal A CD22 Antibody, Human IgG1 at 10 µg/mL (100 µL/well) can bind Fed Human Siglec-2, His Tag (ABIN6253202, ABIN6253526) with a linear range of 0.078-5 µg/mL (QC tested).