

Datasheet for ABIN625323 IL2 Receptor beta ELISA Kit



[Go to Product page](#)

1 Image

Overview

Quantity: 96 tests

Target: IL2 Receptor beta (IL2RB)

Reactivity: Human

Method Type: Sandwich ELISA

Detection Range: 22-6.000 pg/mL

Minimum Detection Limit: 22 pg/mL

Application: ELISA

Product Details

Purpose: Human IL-2 R beta (CD122) ELISA Kit for cell culture supernatants, plasma, and serum samples.

Sample Type: Cell Culture Supernatant, Plasma, Serum

Analytical Method: Quantitative

Detection Method: Colorimetric

Specificity: Cross Reactivity: This ELISA kit shows no cross-reactivity with the following cytokines tested: human Angiogenin, BDNF, BLC, CNTF, ENA-78, FGF-4, IL-1 alpha, IL-1 beta, IL-2, IL-4, IL-5, IL-6, IL-8, IL-9, IL-11, IL-12 p70, IL-12 p40, IL-13, IL-15, I-309, IP-10, FGF-4, FGF-6, FGF-7, G-CSF, GDNF, GM-CSF, IFN-gamma, IGFBP-2, IGFBP-3, IGFBP-4, Leptin (OB), MCP-1, MCP-2, MCP-3, MDC, MIF, MIG, MIP-1 alpha, MIP-1 beta, MIP-1 delta, PARC, PDGF, RANTES, SCF, SDF-1 alpha, TARC, TGF-beta, TIMP-1, TIMP-2, TNF-alpha, TNF-beta, TPO, VEGF.

Sensitivity: 22 pg/mL

Product Details

- Characteristics:
- Strip plates and additional reagents allow for use in multiple experiments
 - Quantitative protein detection
 - Establishes normal range
 - The best products for confirmation of antibody array data

- Components:
- Pre-Coated 96-well Strip Microplate
 - Wash Buffer
 - Stop Solution
 - Assay Diluent(s)
 - Lyophilized Standard
 - Biotinylated Detection Antibody
 - Streptavidin-Conjugated HRP
 - TMB One-Step Substrate

- Material not included:
- Distilled or deionized water
 - Precision pipettes to deliver 2 μ L to 1 μ L volumes
 - Adjustable 1-25 μ L pipettes for reagent preparation
 - 100 μ L and 1 liter graduated cylinders
 - Tubes to prepare standard and sample dilutions
 - Absorbent paper
 - Microplate reader capable of measuring absorbance at 450nm
 - Log-log graph paper or computer and software for ELISA data analysis

Target Details

Target: IL2 Receptor beta (IL2RB)

Alternative Name: IL-2 R beta ([IL2RB Products](#))

Background: Gene Names: IL2RB
Protein names: Interleukin-2 receptor subunit beta (IL-2 receptor subunit beta) (IL-2R subunit beta) (IL-2RB) (High affinity IL-2 receptor subunit beta) (p70-75) (p75) (CD antigen CD122)

Gene ID: 3560

UniProt: [P14784](#)

Pathways: [JAK-STAT Signaling, Growth Factor Binding](#)

Application Details

Application Notes: Recommended Dilution for serum and plasma samples 5-fold

Sample Volume: 100 μ L

Application Details

Plate: Pre-coated

Protocol:

1. Prepare all reagents, samples and standards as instructed in the manual.
2. Add 100 μ L of standard or sample to each well.
3. Incubate 2.5 h at RT or O/N at 4 $^{\circ}$ C.
4. Add 100 μ L of prepared biotin antibody to each well.
5. Incubate 1 h at RT.
6. Add 100 μ L of prepared Streptavidin solution to each well.
7. Incubate 45 min at RT.
8. Add 100 μ L of TMB One-Step Substrate Reagent to each well.
9. Incubate 30 min at RT.
10. Add 50 μ L of Stop Solution to each well.
11. Read at 450 nm immediately.

Restrictions: For Research Use only

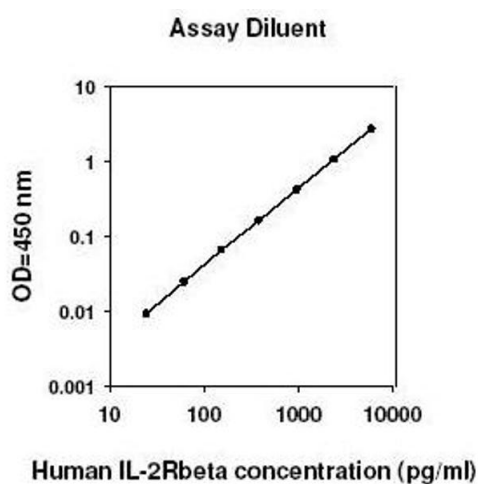
Handling

Storage: -20 $^{\circ}$ C

Storage Comment: The entire kit may be stored at -20 $^{\circ}$ C for up to 1 year from the date of shipment. Avoid repeated freeze-thaw cycles. The kit may be stored at 4 $^{\circ}$ C for up to 6 months. For extended storage, it is recommended to store at -80 $^{\circ}$ C.

Expiry Date: 6 months

Images



ELISA

Image 1.