

Datasheet for ABIN625334 **LYVE1 ELISA Kit**



[Go to Product page](#)

1 Image

Overview

Quantity:	96 tests
Target:	LYVE1
Reactivity:	Human
Method Type:	Sandwich ELISA
Detection Range:	8-2000 pg/mL
Minimum Detection Limit:	8 pg/mL
Application:	ELISA

Product Details

Purpose:	Human LYVE-1 ELISA Kit for cell culture supernatants, plasma, and serum samples.
Sample Type:	Plasma, Cell Culture Supernatant, Serum
Analytical Method:	Quantitative
Detection Method:	Colorimetric
Specificity:	This ELISA kit shows no cross-reactivity with the following cytokines tested: human Angiogenin, BDNF, BLC, ENA-78, FGF- 4, IL-1 alpha, IL-1 beta, IL-2, IL-3, IL-4, IL-5, IL-6, IL-7, IL-8, IL-9, IL-11, IL-12 p70, IL-12 p40, IL-13, IL-15, I-309, IP-10, G-CSF, GM-CSF, IFN-gamma, Leptin (OB), MCP-1, MCP-2, MCP-3, MDC, MIP-1 alpha, MIP-1 beta, MIP-1 delta, PARC, PDGF, RANTES, SCF, TARC, TGF-beta, TIMP-1, TIMP-2, TNF-alpha, TNF-beta, TPO, VEGF.
Sensitivity:	8 pg/mL
Characteristics:	<ul style="list-style-type: none">• Strip plates and additional reagents allow for use in multiple experiments

Product Details

- Quantitative protein detection
- Establishes normal range
- The best products for confirmation of antibody array data

- Components:
- Pre-Coated 96-well Strip Microplate
 - Wash Buffer
 - Stop Solution
 - Assay Diluent(s)
 - Lyophilized Standard
 - Biotinylated Detection Antibody
 - Streptavidin-Conjugated HRP
 - TMB One-Step Substrate

- Material not included:
- Distilled or deionized water
 - Precision pipettes to deliver 2 µL to 1 µL volumes
 - Adjustable 1-25 µL pipettes for reagent preparation
 - 100 µL and 1 liter graduated cylinders
 - Tubes to prepare standard and sample dilutions
 - Absorbent paper
 - Microplate reader capable of measuring absorbance at 450nm
 - Log-log graph paper or computer and software for ELISA data analysis

Target Details

Target: LYVE1

Alternative Name: LYVE-1 ([LYVE1 Products](#))

Background: Gene Names: LYVE1 CRSBP1 HAR XLKD1 UNQ230/PRO263
Protein names: Lymphatic vessel endothelial hyaluronic acid receptor 1 (LYVE-1) (Cell surface retention sequence-binding protein 1) (CRSBP-1) (Extracellular link domain-containing protein 1) (Hyaluronic acid receptor)

Gene ID: 10894

UniProt: [Q9Y5Y7](#)

Pathways: [Glycosaminoglycan Metabolic Process](#)

Application Details

Application Notes: Recommended Dilution for serum and plasma samples 100 - 2,000 fold

Sample Volume: 100 µL

Application Details

Plate: Pre-coated

Protocol:

1. Prepare all reagents, samples and standards as instructed in the manual.
2. Add 100 μ L of standard or sample to each well.
3. Incubate 2.5 h at RT or O/N at 4 $^{\circ}$ C.
4. Add 100 μ L of prepared biotin antibody to each well.
5. Incubate 1 h at RT.
6. Add 100 μ L of prepared Streptavidin solution to each well.
7. Incubate 45 min at RT.
8. Add 100 μ L of TMB One-Step Substrate Reagent to each well.
9. Incubate 30 min at RT.
10. Add 50 μ L of Stop Solution to each well.
11. Read at 450 nm immediately.

Restrictions: For Research Use only

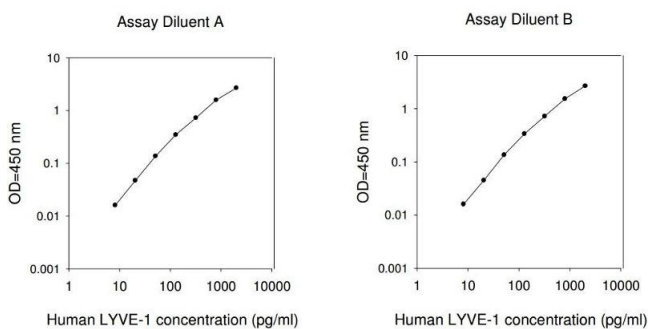
Handling

Storage: -20 $^{\circ}$ C

Storage Comment: The entire kit may be stored at -20 $^{\circ}$ C for up to 1 year from the date of shipment. Avoid repeated freeze-thaw cycles. The kit may be stored at 4 $^{\circ}$ C for up to 6 months. For extended storage, it is recommended to store at -80 $^{\circ}$ C.

Expiry Date: 6 months

Images



ELISA

Image 1.