

Datasheet for ABIN6253519

**SIGLEC10 Protein (AA 17-546) (Fc Tag)**[Go to Product page](#)**2** Images

## Overview

Quantity:	100 µg
Target:	SIGLEC10
Protein Characteristics:	AA 17-546
Origin:	Human
Source:	HEK-293 Cells
Protein Type:	Recombinant
Purification tag / Conjugate:	This SIGLEC10 protein is labelled with Fc Tag.

## Product Details

Sequence:	AA 17-546
Purity:	>95 % as determined by SDS-PAGE.
Endotoxin Level:	Less than 0.1 EU per µg by the LAL method.

## Target Details

Target:	SIGLEC10
Alternative Name:	Siglec-10 ( <a href="#">SIGLEC10 Products</a> )
Background:	The siglecs (sialic acid-binding Ig-like lectins) are a distinct subset of the Ig superfamily with adhesion-molecule-like structure. We describe here a novel member of the siglec protein family that shares a similar structure including five Ig-like domains, a transmembrane domain, and a cytoplasmic tail containing two ITIM-signaling motifs. Siglec-10 was identified through database mining of an asthmatic eosinophil EST library. The Siglec-10-VAP-1 interaction seems

## Target Details

to mediate lymphocyte adhesion to endothelium and has the potential to modify the inflammatory microenvironment via the enzymatic end products.

Molecular Weight: 85.6 kDa

NCBI Accession: [NP\\_149121](#)

## Application Details

Restrictions: For Research Use only

## Handling

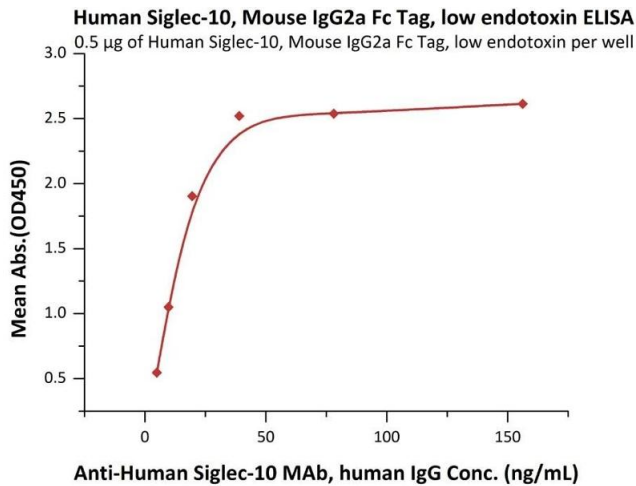
Format: Lyophilized

Buffer: Tris with Glycine, Arginine and NaCl, pH 7.5

Handling Advice: Please avoid repeated freeze-thaw cycles.

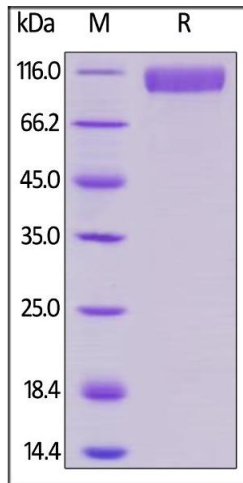
Storage: -20 °C

## Images



### ELISA

**Image 1.** Immobilized Human Siglec-10, Mouse IgG2a Fc Tag, low endotoxin (ABIN5954971, ABIN6253519) at 5 µg/mL (100 µL/well) can bind A Siglec-10 MAb, human IgG with a linear range of 0.6-20 ng/mL (QC tested).



### SDS-PAGE

**Image 2.** Human Siglec-10, Mouse IgG2a Fc Tag, low endotoxin on under reducing (R) condition. The gel was stained overnight with Coomassie Blue. The purity of the protein is greater than 95 % .