



[Go to Product page](#)

Datasheet for ABIN6253547

IGF1R Protein (AA 31-936) (His tag)

2 Images

Overview

Quantity:	100 µg
Target:	IGF1R
Protein Characteristics:	AA 31-936
Origin:	Rat
Source:	HEK-293 Cells
Protein Type:	Recombinant
Purification tag / Conjugate:	This IGF1R protein is labelled with His tag.

Product Details

Sequence:	AA 31-936
Purity:	>90 % as determined by SDS-PAGE.
Endotoxin Level:	Less than 1.0 EU per µg by the LAL method.

Target Details

Target:	IGF1R
Alternative Name:	IGF-I R (IGF1R Products)
Background:	The Insulin-like Growth Factor 1 Receptor (IGF1) is also known as CD221, JTK13. and is a transmembrane receptor that is activated by IGF-1 and by the related growth factor IGF-2. It belongs to the large class of tyrosine kinase receptors. This receptor mediates the effects of IGF-1, which is a polypeptide protein hormone similar in molecular structure to insulin. IGF1R is make up of two alpha subunits and two beta subunits ,the Both the α and β subunits are

Target Details

synthesized from a single mRNA precursor. The precursor is then glycosylated, proteolytically cleaved, and crosslinked by cysteine bonds to form a functional transmembrane $\alpha\beta$ chain. The α chains are located extracellularly while the β subunit spans the membrane and are responsible for intracellular signal transduction upon ligand stimulation. IGF1R have a binding site for ATP, which is used to provide the phosphates for autophosphorylation. There is a 60 % homology between IGF1R and the insulin receptor. In response to ligand binding, the α chains induce the tyrosine autophosphorylation of the β chains. This event triggers a cascade of intracellular signaling that, while somewhat cell type specific, often promotes cell survival and cell proliferation.

Molecular Weight: 81.3 kDa and 24.2 kDa

NCBI Accession: [NP_434694](#)

Pathways: [RTK Signaling](#), [Regulation of Hormone Metabolic Process](#), [Regulation of Hormone Biosynthetic Process](#), [Autophagy](#)

Application Details

Restrictions: For Research Use only

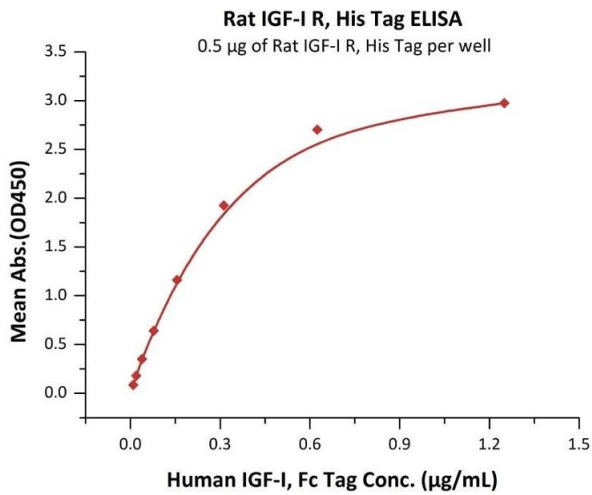
Handling

Format: Lyophilized

Buffer: PBS, pH 7.4

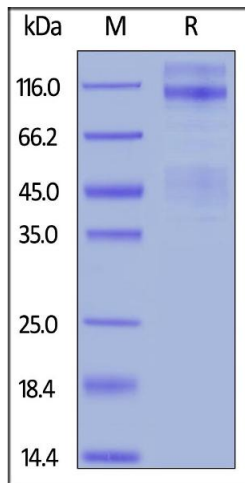
Handling Advice: Please avoid repeated freeze-thaw cycles.

Storage: -20 °C



ELISA

Image 1. Immobilized Rat IGF-I R, His Tag (ABIN6253207,ABIN6253547) at 5 µg/mL (100 µL/well) can bind Human IGF-I, Fc Tag (ABIN2181263,ABIN2181262) with a linear range of 0.01-0.313 µg/mL (QC tested).



SDS-PAGE

Image 2. Rat IGF-I R, His Tag on under reducing (R) condition. The gel was stained overnight with Coomassie Blue. The purity of the protein is greater than 90 % .