



[Go to Product page](#)

Datasheet for ABIN6253560

CD22 Protein (AA 20-687) (Fc Tag)

2 Images

Overview

| | |
|-------------------------------|--|
| Quantity: | 100 µg |
| Target: | CD22 |
| Protein Characteristics: | AA 20-687 |
| Origin: | Human |
| Source: | HEK-293 Cells |
| Protein Type: | Recombinant |
| Biological Activity: | Active |
| Purification tag / Conjugate: | This CD22 protein is labelled with Fc Tag. |

Product Details

| | |
|------------------|---|
| Sequence: | AA 20-687 |
| Purity: | >95 % as determined by SDS-PAGE. |
| Endotoxin Level: | Less than 0.01 EU per µg by the LAL method. |

Target Details

| | |
|-------------------|--|
| Target: | CD22 |
| Alternative Name: | Siglec-2 (CD22 Products) |
| Background: | B-cell receptor CD22 is also known as Sialic acid-binding Ig-like lectin 2 (Siglec-2), B-lymphocyte cell adhesion molecule (BL-CAM), T-cell surface antigen Leu-14, which belongs to the immunoglobulin superfamily and SIGLEC (sialic acid binding Ig-like lectin) family. CD22 mediates B-cell B-cell interactions, and may be involved in the localization of B-cells in lymphoid |

Target Details

tissues. Siglec-2 / CD22 binds sialylated glycoproteins, one of which is CD45. Siglec2 / CD22 plays a role in positive regulation through interaction with Src family tyrosine kinases and may also act as an inhibitory receptor by recruiting cytoplasmic phosphatases via their SH2 domains that block signal transduction through dephosphorylation of signaling molecules.

Molecular Weight: 103.0 kDa

NCBI Accession: [NP_001762](#)

Application Details

Restrictions: For Research Use only

Handling

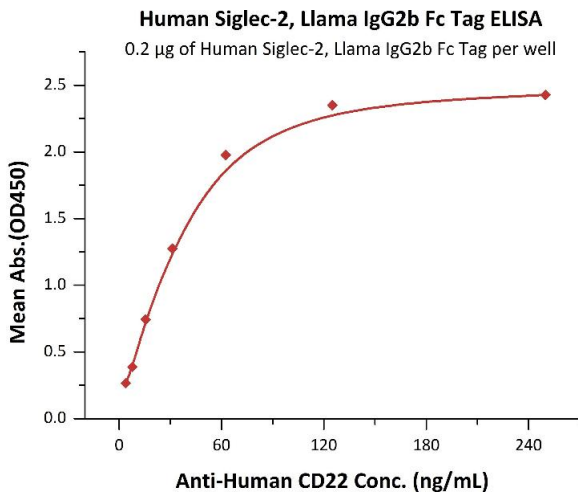
Format: Lyophilized

Buffer: Tris with Glycine, Arginine and NaCl, pH 7.5

Handling Advice: Please avoid repeated freeze-thaw cycles.

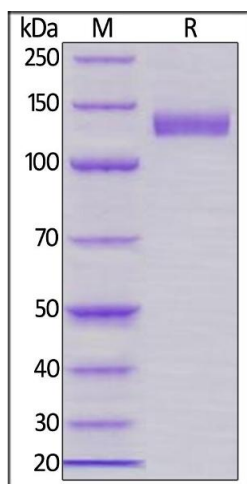
Storage: -20 °C

Validation report #101202 for Western Blotting (WB)



ELISA

Image 1. Immobilized Human Siglec-2, Llama IgG2b Fc Tag, low endotoxin (ABIN5954980, ABIN6253560) at 2 µg/mL (100 µL/well) can bind A CD22 with a linear range of 4-63 ng/mL (QC tested).



SDS-PAGE

Image 2. Human Siglec-2, Llama IgG2b Fc Tag, low endotoxin on under reducing (R) condition. The gel was stained overnight with Coomassie Blue. The purity of the protein is greater than 95 % .