

Datasheet for ABIN6253581
SLAMF6 Protein (AA 22-226) (His tag)



[Go to Product page](#)

1 Image

Overview

Quantity:	100 µg
Target:	SLAMF6
Protein Characteristics:	AA 22-226
Origin:	Human
Source:	HEK-293 Cells
Protein Type:	Recombinant
Biological Activity:	Active
Purification tag / Conjugate:	This SLAMF6 protein is labelled with His tag.

Product Details

Sequence:	AA 22-226
Purity:	>95 % as determined by SDS-PAGE.
Endotoxin Level:	Less than 1.0 EU per µg by the LAL method.

Target Details

Target:	SLAMF6
Alternative Name:	NTB-A (SLAMF6 Products)
Background:	The SLAM family of receptors is composed of six members named SLAM (CD150), 2B4 (CD244), Ly-9 (CD229), CD84, natural killer, T and B cell antigen (NTB-A, Ly108 in the mouse. Most, if not all, immune cell types express more than one SLAM family receptor. All six SLAM-related genes are located within a 400-500 kilobase (kb) genomic segment on chromosome 1

Target Details

in humans and mice. This feature implies that the genes that encode the SLAM family were created by serial gene duplication.

Molecular Weight: 25.0 kDa

NCBI Accession: [NP_001171643](#)

Application Details

Restrictions: For Research Use only

Handling

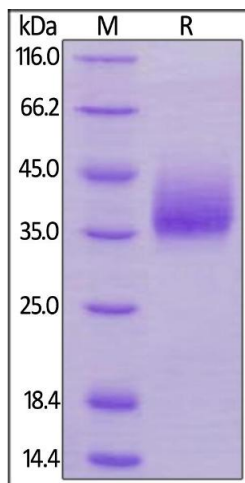
Format: Lyophilized

Buffer: PBS, pH 7.4

Handling Advice: Please avoid repeated freeze-thaw cycles.

Storage: -20 °C

Images



SDS-PAGE

Image 1. Human NTB-A, His Tag on under reducing (R) condition. The gel was stained overnight with Coomassie Blue. The purity of the protein is greater than 95 % .