

Datasheet for ABIN6253591

Prolactin Protein (PRL) (AA 29-227) (Fc Tag)[Go to Product page](#)**2** Images

Overview

Quantity:	100 µg
Target:	Prolactin (PRL)
Protein Characteristics:	AA 29-227
Origin:	Human
Source:	HEK-293 Cells
Protein Type:	Recombinant
Purification tag / Conjugate:	This Prolactin protein is labelled with Fc Tag.

Product Details

Sequence:	AA 29-227
Purity:	>95 % as determined by SDS-PAGE.
Endotoxin Level:	Less than 0.1 EU per µg by the LAL method.

Target Details

Target:	Prolactin (PRL)
Alternative Name:	Prolactin (PRL Products)
Background:	<p>Prolactin (gene name PRL) is a secreted neuroendocrine pituitary hormone that acts primarily on the mammary gland to promote lactation, but has pleiotropic effects in both males and females. Prolactin is synthesized as a prohormone. Following cleavage of the signal peptide, the length of the mature hormone is between 194 and 199 amino acids, depending on species. Hormone structure is stabilized by three intramolecular disulfide bonds. Excessive secretion of</p>

Target Details

prolactin - hyperprolactinemia - is a relative common disorder in humans. This condition has numerous causes, including prolactin-secreting tumors and therapy with certain drugs. The prolactin receptor (gene name PRLR) is a transmembrane type I glycoprotein that belongs to the cytokine hematopoietic receptor family. Expression of the prolactin receptor is widespread. Each prolactin molecule is thought to bind two receptor molecules

Molecular Weight: 49.8 kDa

NCBI Accession: [NP_000939](#)

Pathways: [JAK-STAT Signaling](#), [Peptide Hormone Metabolism](#), [Response to Growth Hormone Stimulus](#), [Protein targeting to Nucleus](#)

Application Details

Restrictions: For Research Use only

Handling

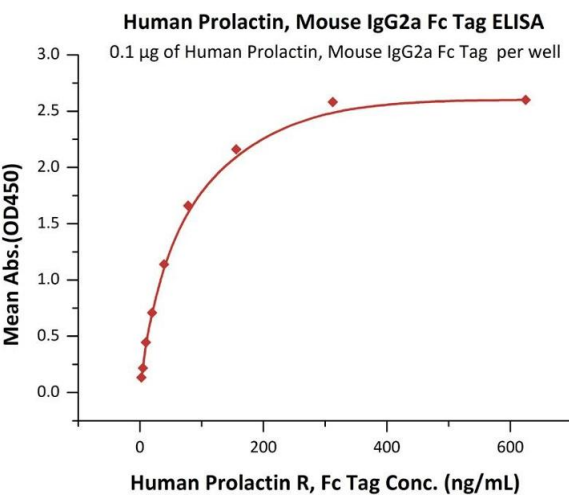
Format: Lyophilized

Buffer: Tris with Glycine, Arginine and NaCl, pH 7.5

Handling Advice: Please avoid repeated freeze-thaw cycles.

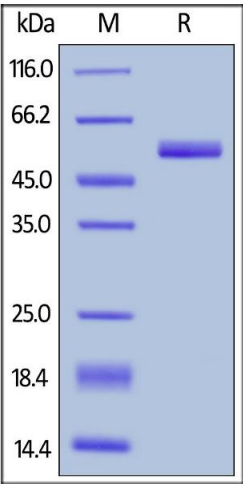
Storage: -20 °C

Images



ELISA

Image 1. Immobilized Human Prolactin, Mouse IgG2a Fc Tag, low endotoxin (ABIN6253198,ABIN6253591) at 1 µg/mL (100 µL/well) can bind Human Prolactin R, Fc Tag (ABIN5674642,ABIN6253668) with a linear range of 2-39 ng/mL (QC tested).



SDS-PAGE

Image 2. Human Prolactin, Mouse IgG2a Fc Tag, low endotoxin on under reducing (R) condition. The gel was stained overnight with Coomassie Blue. The purity of the protein is greater than 95 % .