



[Go to Product page](#)

Datasheet for ABIN6253597

## CD33 Protein (CD33) (AA 18-259) (Fc Tag)

### 2 Images

#### Overview

Quantity:	100 µg
Target:	CD33
Protein Characteristics:	AA 18-259
Origin:	Human
Source:	HEK-293 Cells
Protein Type:	Recombinant
Biological Activity:	Active
Purification tag / Conjugate:	This CD33 protein is labelled with Fc Tag.

#### Product Details

Sequence:	AA 18-259
Purity:	>95 % as determined by SDS-PAGE.
Endotoxin Level:	Less than 0.01 EU per µg by the LAL method.

#### Target Details

Target:	CD33
Alternative Name:	Siglec-3 ( <a href="#">CD33 Products</a> )
Background:	Myeloid cell surface antigen CD33 is also known as SIGLEC3, Siglecs (sialic acid binding Ig-like lectins) and GP67, is a single-pass type I membrane protein which belongs to the immunoglobulin superfamily and SIGLEC (sialic acid binding Ig-like lectin) family. Human CD33 / Siglec-3 cDNA encodes a 364 amino acid (aa) polypeptide with a hydrophobic signal

## Target Details

peptide, an N-terminal Ig-like V-type domain, one Ig-like C2-type domains, a transmembrane region and a cytoplasmic tail. CD33 / Siglec-3 usually considered myeloid-specific, but it can also be found on some lymphoid cells. In the immune response, CD33 / Siglec-3 may act as an inhibitory receptor upon ligand induced tyrosine phosphorylation by recruiting cytoplasmic phosphatase(s) via their SH2 domain(s) that block signal transduction through dephosphorylation of signaling molecules. CD33 / Siglec-3 induces apoptosis in acute myeloid leukemia.

Molecular Weight: 54.6 kDa

## Application Details

Restrictions: For Research Use only

## Handling

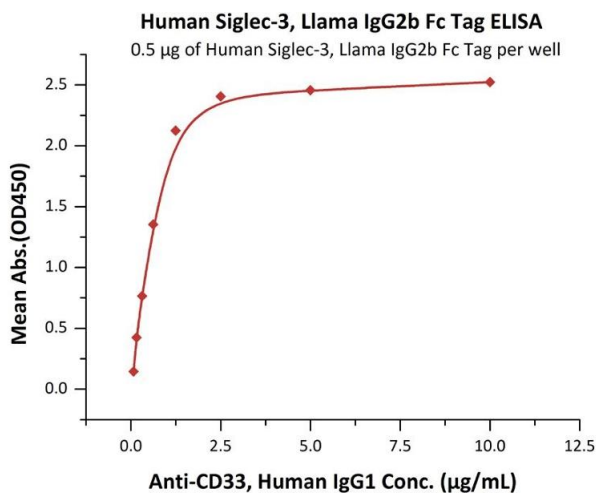
Format: Lyophilized

Buffer: Tris with Glycine, Arginine and NaCl, pH 7.5

Handling Advice: Please avoid repeated freeze-thaw cycles.

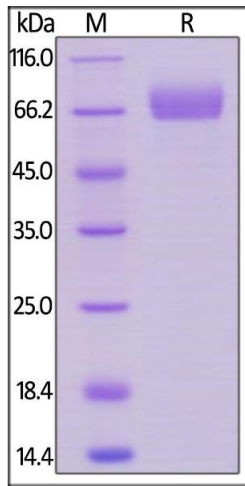
Storage: -20 °C

## Images



### ELISA

**Image 1.** Immobilized Human Siglec-3, Llama IgG2b Fc Tag, low endotoxin (ABIN5954974, ABIN6253597) at 5 µg/mL (100 µL/well) can bind A, Human IgG1 with a linear range of 0.078-1.25 µg/mL (QC tested).



### SDS-PAGE

**Image 2.** Human Siglec-3, Llama IgG2b Fc Tag, low endotoxin on under reducing (R) condition. The gel was stained overnight with Coomassie Blue. The purity of the protein is greater than 95 % .