

Datasheet for ABIN6253621

## TACSTD2 Protein (AA 27-274) (His tag)



[Go to Product page](#)

### 2 Images

#### Overview

Quantity:	200 µg
Target:	TACSTD2
Protein Characteristics:	AA 27-274
Origin:	Human
Source:	HEK-293 Cells
Protein Type:	Recombinant
Purification tag / Conjugate:	This TACSTD2 protein is labelled with His tag.

#### Product Details

Sequence:	AA 27-274
Purity:	>95 % as determined by SDS-PAGE.
Endotoxin Level:	Less than 1.0 EU per µg by the LAL method.

#### Target Details

Target:	TACSTD2
Alternative Name:	TROP-2 ( <a href="#">TACSTD2 Products</a> )
Background:	TROP-2 is a single-copy gene in human cells, and encodes a type-1 transmembrane glycoprotein which is over-expressed in various malignancies, also referred to as tumor associated calcium signal transducer 2 (TACSTD2), GA733-1 or M1S1. TROP-2 is related to epithelial cell adhesion molecule (EpCAM), also called TROP-1, gp40, and KSA. Trop-1 and Trop-2 are homologous to serum IGF-II-binding proteins and appear as signal transducers. Thus,

Target Details

	they likely represent novel cell-surface receptors and may play a role in regulating the growth of carcinoma cells.
Molecular Weight:	29.8 kDa
NCBI Accession:	<a href="#">NP_002344</a>

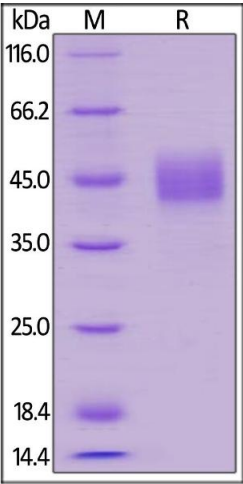
Application Details

Restrictions:	For Research Use only
---------------	-----------------------

Handling

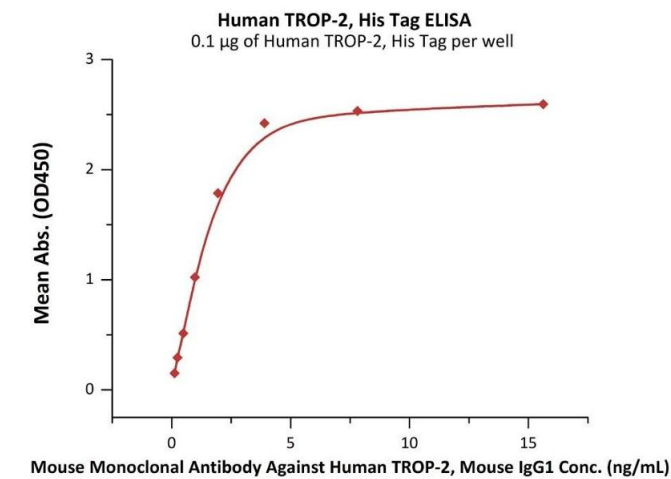
Format:	Lyophilized
Buffer:	PBS, pH 7.4
Handling Advice:	Please avoid repeated freeze-thaw cycles.
Storage:	-20 °C

Images



**SDS-PAGE**

**Image 1.** Human TROP-2, His Tag on under reducing (R) condition. The gel was stained overnight with Coomassie Blue. The purity of the protein is greater than 95 % .



ELISA

**Image 2.** Immobilized Human TROP-2, His Tag (ABIN5955015,ABIN6253621) at 1 µg/mL (100 µL/well) can bind Mouse Monoclonal Antibody Against Human TROP-2, Mouse IgG1 with a linear range of 0.1-2 ng/mL (QC tested).