

Datasheet for ABIN6253668

Prolactin Receptor Protein (PRLR) (AA 25-234) (Fc Tag)



[Go to Product page](#)

3 Images

Overview

Quantity:	100 µg
Target:	Prolactin Receptor (PRLR)
Protein Characteristics:	AA 25-234
Origin:	Human
Source:	HEK-293 Cells
Protein Type:	Recombinant
Biological Activity:	Active
Purification tag / Conjugate:	This Prolactin Receptor protein is labelled with Fc Tag.

Product Details

Sequence:	AA 25-234
Characteristics:	This protein carries a human IgG1 Fc tag at the C-terminus. The protein has a calculated MW of 51.0 kDa. The protein migrates as 64 kDa under reducing (R) condition (SDS-PAGE) due to glycosylation.
Purity:	>95 % as determined by SDS-PAGE.
Endotoxin Level:	Less than 1.0 EU per µg by the LAL method.

Target Details

Target:	Prolactin Receptor (PRLR)
Alternative Name:	Prolactin R (PRLR Products)

Target Details

Background: As a transmembrane receptor, the prolactin receptor (PRL-R) interacts with prolactin. In addition, the PRL-R also binds and is activated by growth hormone (GH) and human placental lactogen (hPL). Preclinical investigations, epidemiological studies and analyses of tissue specimens from patients strongly support the contribution of prolactin receptor (PRLR) signaling to breast and prostate tumorigenesis and cancer progression. Moreover, The PRLR has been found to be essential for lobuloalveolar maturation of the mammary glands during pregnancy, as evidenced by the fact that PRLR knockout mice show severely impaired development of lobuloalveolar structures.

Molecular Weight: 51.0 kDa

NCBI Accession: [NP_000940](#)

Pathways: [JAK-STAT Signaling](#), [Response to Growth Hormone Stimulus](#)

Application Details

Restrictions: For Research Use only

Handling

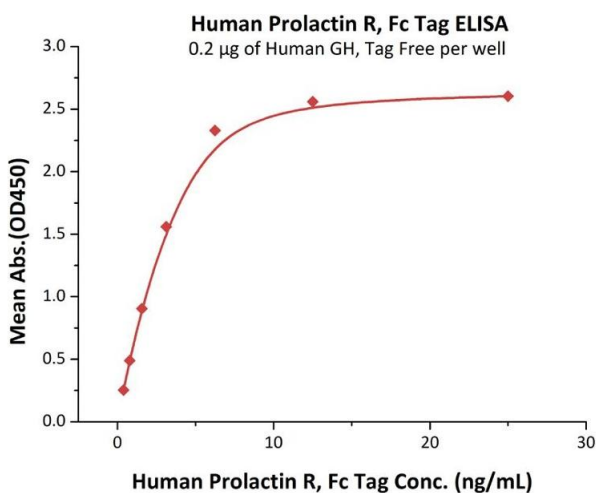
Format: Lyophilized

Buffer: Tris with Glycine, Arginine and NaCl, pH 7.5

Handling Advice: Please avoid repeated freeze-thaw cycles.

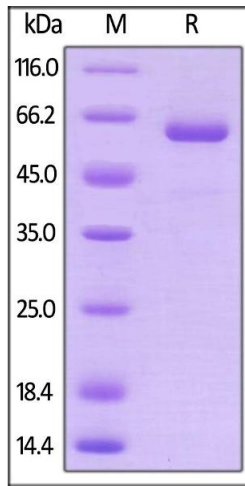
Storage: -20 °C

Images



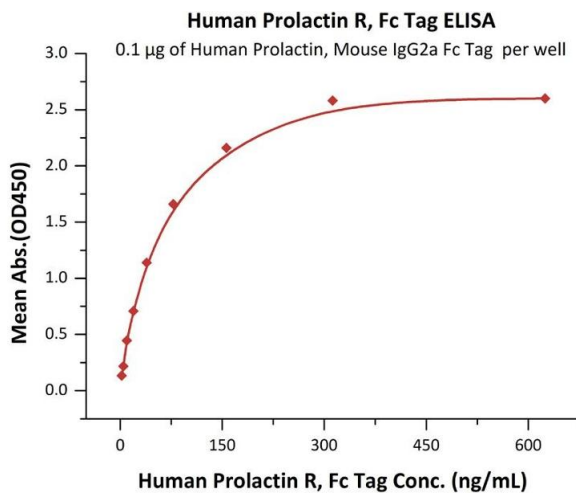
ELISA

Image 1. Immobilized Human GH, Tag Free at 2 µg/mL (100 µL/well) can bind Human Prolactin R, Fc Tag (ABIN5674642, ABIN6253668) with a linear range of 0.4-6 ng/mL (Routinely tested).



SDS-PAGE

Image 2. Human Prolactin R, Fc Tag on under reducing (R) condition. The gel was stained overnight with Coomassie Blue. The purity of the protein is greater than 95 % .



ELISA

Image 3. Immobilized Human Prolactin, Mouse IgG2a Fc Tag, low endotoxin (ABIN6253198,ABIN6253591) at 1 µg/mL (100 µL/well) can bind Human Prolactin R, Fc Tag (ABIN5674642,ABIN6253668) with a linear range of 2-39 ng/mL (QC tested).