

Datasheet for ABIN6253709
LILRB3 Protein (AA 24-443) (Fc Tag)



[Go to Product page](#)

1 Image

Overview

Quantity:	100 µg
Target:	LILRB3
Protein Characteristics:	AA 24-443
Origin:	Human
Source:	HEK-293 Cells
Protein Type:	Recombinant
Purification tag / Conjugate:	This LILRB3 protein is labelled with Fc Tag.

Product Details

Sequence:	AA 24-443
Characteristics:	This protein carries a human IgG1 Fc tag at the C-terminus. The protein has a calculated MW of 72.8 kDa. As a result of glycosylation, the protein migrates as 90-115 kDa under reducing (R) condition, and 150 kDa under non-reducing (NR) condition (SDS-PAGE)
Purity:	>95 % as determined by SDS-PAGE.
Endotoxin Level:	Less than 1.0 EU per µg by the LAL method.

Target Details

Target:	LILRB3
Alternative Name:	LILRB3 (LILRB3 Products)
Background:	Leukocyte immunoglobulin-like receptor subfamily B member 3 is also known as LILRB3,ILT-5 or CD85a. LILRB3 plays a role as receptor for class I MHC antigens, which activated upon

Target Details

coligation of LILRB3 and immune receptors, such as FCGR2B and the B-cell receptor. LILRB3 and LILRA6 represent a pair of inhibitory/activating receptors with identical extracellular domains and unknown ligands. LILRB3 can mediate inhibitory signaling via immunoreceptor tyrosine-based inhibition motifs in its cytoplasmic tail whereas LILRA6 can signal through association with an activating adaptor molecule, FcRγ.

Molecular Weight: 72.8 kDa

Application Details

Restrictions: For Research Use only

Handling

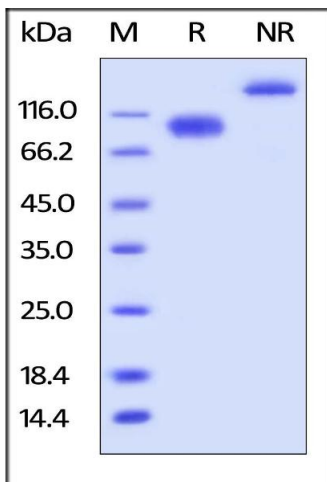
Format: Lyophilized

Buffer: Tris with Glycine, Arginine and NaCl, pH 7.5

Handling Advice: Please avoid repeated freeze-thaw cycles.

Storage: -20 °C

Images



SDS-PAGE

Image 1. Human LILRB3, Fc Tag on under reducing (R) and non-reducing (NR) conditions. The gel was stained overnight with Coomassie Blue. The purity of the protein is greater than 95 %.