

Datasheet for ABIN6253710

LILRB3 Protein (AA 24-443) (His tag)[Go to Product page](#)**1** Image

Overview

Quantity:	100 µg
Target:	LILRB3
Protein Characteristics:	AA 24-443
Origin:	Human
Source:	HEK-293 Cells
Protein Type:	Recombinant
Purification tag / Conjugate:	This LILRB3 protein is labelled with His tag.

Product Details

Sequence:	AA 24-443
Characteristics:	This protein carries a polyhistidine tag at the C-terminus. The protein has a calculated MW of 48 kDa. The protein migrates as 60-78 kDa under reducing (R) condition (SDS-PAGE) due to glycosylation.
Purity:	>92 % as determined by SDS-PAGE.
Endotoxin Level:	Less than 1.0 EU per µg by the LAL method.

Target Details

Target:	LILRB3
Alternative Name:	LILRB3 (LILRB3 Products)
Background:	Leukocyte immunoglobulin-like receptor subfamily B member 3 is also known as LILRB3,ILT-5 or CD85a. LILRB3 plays an role as receptor for class I MHC antigens, which activated upon

Target Details

coligation of LILRB3 and immune receptors, such as FCGR2B and the B-cell receptor. LILRB3 and LILRA6 represent a pair of inhibitory/activating receptors with identical extracellular domains and unknown ligands. LILRB3 can mediate inhibitory signaling via immunoreceptor tyrosine-based inhibition motifs in its cytoplasmic tail whereas LILRA6 can signal through association with an activating adaptor molecule, FcRγ.

Molecular Weight: 48 kDa

Application Details

Restrictions: For Research Use only

Handling

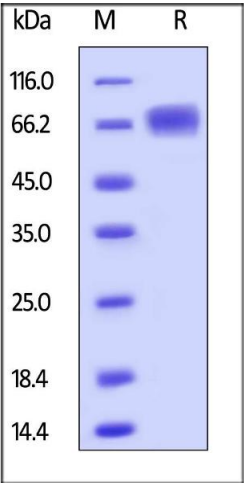
Format: Lyophilized

Buffer: PBS, pH 7.4

Handling Advice: Please avoid repeated freeze-thaw cycles.

Storage: -20 °C

Images



SDS-PAGE

Image 1. Human LILRB3, His Tag on under reducing (R) condition. The gel was stained overnight with Coomassie Blue. The purity of the protein is greater than 92 % .