

Datasheet for ABIN6253713
BCMA Protein (AA 1-53) (Fc Tag)



[Go to Product page](#)

3 Images

Overview

Quantity:	100 µg
Target:	BCMA (TNFRSF17)
Protein Characteristics:	AA 1-53
Origin:	Cynomolgus, Rhesus Monkey
Source:	HEK-293 Cells
Protein Type:	Recombinant
Biological Activity:	Active
Purification tag / Conjugate:	This BCMA protein is labelled with Fc Tag.

Product Details

Sequence:	AA 1-53
Characteristics:	This protein carries a human IgG1 Fc tag at the C-terminus. The protein has a calculated MW of 32.1 kDa. As a result of glycosylation, the protein migrates as 37 kDa and 38-42 kDa under reducing (R) condition, and 60-66 kDa under non-reducing (NR) condition.
Purity:	>90 % as determined by SDS-PAGE.
Endotoxin Level:	Less than 1.0 EU per µg by the LAL method.

Target Details

Target:	BCMA (TNFRSF17)
Alternative Name:	BCMA (TNFRSF17 Products)

Target Details

Background:	Tumor necrosis factor receptor superfamily member 17 (TNFRSF17) is also known as B-cell maturation protein (BCMA), CD antigen CD269, which is a member of the TNF-receptor superfamily. TNFRSF17 contains one TNFR-Cys repeat. TNFRSF17 is expressed in mature B-cells, but not in T-cells or monocytes. TNFRSF17 is receptor for TNFSF13B/BLyS/BAFF and TNFSF13/APRIL. TNFRSF17 promotes B-cell survival and plays a role in the regulation of humoral immunity. TNFRSF17 can activate NF-kappa-B and JNK.
Molecular Weight:	32.1 kDa
NCBI Accession:	XP_001106892

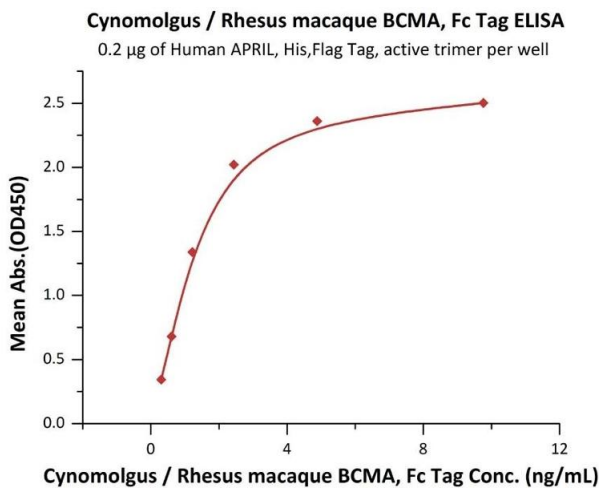
Application Details

Restrictions:	For Research Use only
---------------	-----------------------

Handling

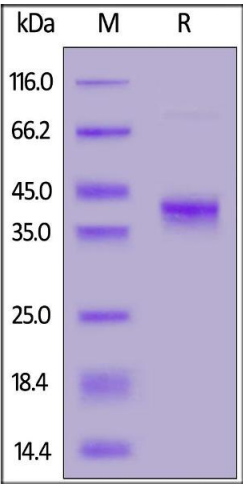
Format:	Lyophilized
Buffer:	Tris with Glycine, Arginine and NaCl, pH 7.5
Handling Advice:	Please avoid repeated freeze-thaw cycles.
Storage:	-20 °C

Images



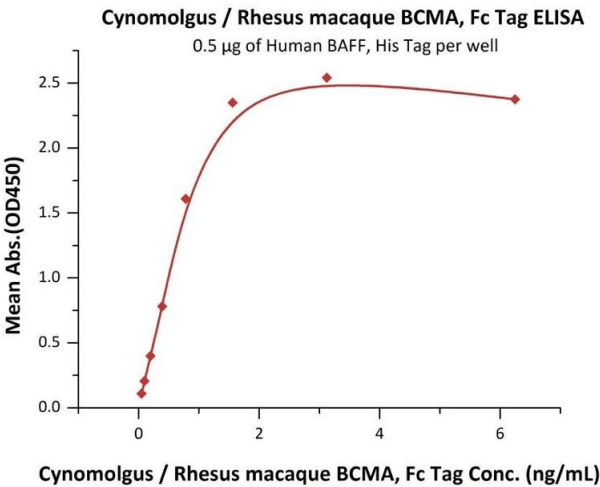
ELISA

Image 1. Immobilized Human APRIL, His,Flag Tag, active trimer (ABIN6972945) at 2 µg/mL (100 µL/well) can bind Cynomolgus / Rhesus macaque BCMA, Fc Tag (ABIN5674614,ABIN6253713) with a linear range of 0.3-5 ng/mL (Routinely tested).



SDS-PAGE

Image 2. Cynomolgus / Rhesus macaque BCMA, Fc Tag on under reducing (R) condition. The gel was stained overnight with Coomassie Blue. The purity of the protein is greater than 90 % .



ELISA

Image 3. Immobilized Human BAFF, His Tag (ABIN4949073,ABIN4949074) at 5 µg/mL (100 µL/well) can bind Cynomolgus / Rhesus macaque BCMA, Fc Tag (ABIN5674614,ABIN6253713) with a linear range of 0.05-2 ng/mL (QC tested).