

Datasheet for ABIN625379

**Chordin ELISA Kit****1** Image[Go to Product page](#)

## Overview

Quantity:	96 tests
Target:	Chordin (CHRD)
Reactivity:	Mouse
Method Type:	Sandwich ELISA
Detection Range:	49-12.000 pg/mL
Minimum Detection Limit:	49 pg/mL
Application:	ELISA

## Product Details

Purpose:	Mouse Chordin ELISA Kit for Cell Culture Supernatants, EDTA and/or Citrate treated plasma, and Serum samples. Heparin is not recommended.
Sample Type:	Cell Culture Supernatant, Plasma, Serum
Analytical Method:	Quantitative
Detection Method:	Colorimetric
Specificity:	The antibody pair provided in this kit recognizes mouse Chordin.
Sensitivity:	49 pg/mL
Characteristics:	<ul style="list-style-type: none"><li>• Strip plates and additional reagents allow for use in multiple experiments</li><li>• Quantitative protein detection</li><li>• Establishes normal range</li><li>• The best products for confirmation of antibody array data</li></ul>

## Product Details

Components:	<ul style="list-style-type: none"><li>• Pre-Coated 96-well Strip Microplate</li><li>• Wash Buffer</li><li>• Stop Solution</li><li>• Assay Diluent(s)</li><li>• Lyophilized Standard</li><li>• Biotinylated Detection Antibody</li><li>• Streptavidin-Conjugated HRP</li><li>• TMB One-Step Substrate</li></ul>
-------------	--

Material not included:	<ul style="list-style-type: none"><li>• Distilled or deionized water</li><li>• Precision pipettes to deliver 2 µL to 1 µL volumes</li><li>• Adjustable 1-25 µL pipettes for reagent preparation</li><li>• 100 µL and 1 liter graduated cylinders</li><li>• Tubes to prepare standard and sample dilutions</li><li>• Absorbent paper</li><li>• Microplate reader capable of measuring absorbance at 450nm</li><li>• Log-log graph paper or computer and software for ELISA data analysis</li></ul>
------------------------	---

## Target Details

Target:	Chordin (CHRD)
Alternative Name:	Chordin ( <a href="#">CHRD Products</a> )
Background:	Gene Names: Chrd Protein names: Chordin
Gene ID:	12667
UniProt:	<a href="#">Q9Z0E2</a>

## Application Details

Application Notes:	Recommended Dilution for serum and plasma samples2 fold
Sample Volume:	100 µL
Plate:	Pre-coated
Protocol:	<ol style="list-style-type: none"><li>1. Prepare all reagents, samples and standards as instructed in the manual.</li><li>2. Add 100 µL of standard or sample to each well.</li><li>3. Incubate 2.5 h at RT or O/N at 4 °C.</li><li>4. Add 100 µL of prepared biotin antibody to each well.</li><li>5. Incubate 1 h at RT.</li><li>6. Add 100 µL of prepared Streptavidin solution to each well.</li></ol>

Application Details

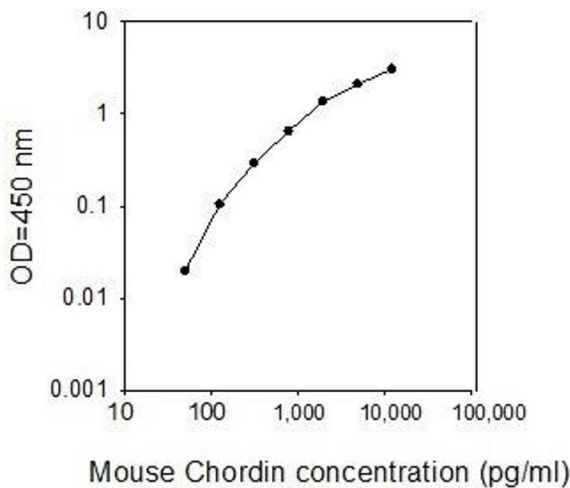
- 7. Incubate 45 min at RT.
- 8. Add 100 µL of TMB One-Step Substrate Reagent to each well.
- 9. Incubate 30 min at RT.
- 10. Add 50 µL of Stop Solution to each well.
- 11. Read at 450 nm immediately.

Sample Preparation:	Collect plasma using EDTA and/or Citrate as the anticoagulant. Heparin is not recommended.
Restrictions:	For Research Use only

Handling

Storage:	-20 °C
Storage Comment:	The entire kit may be stored at -20°C for up to 1 year from the date of shipment. Avoid repeated freeze-thaw cycles. The kit may be stored at 4°C for up to 6 months. For extended storage, it is recommended to store at -80°C.
Expiry Date:	6 months

Images



**ELISA**

**Image 1.**