

Datasheet for ABIN6254019
anti-ATRIP antibody (pSer239)



[Go to Product page](#)

1 Image

Overview

Quantity:	100 µL
Target:	ATRIP
Binding Specificity:	pSer239
Reactivity:	Human
Host:	Rabbit
Clonality:	Polyclonal
Conjugate:	This ATRIP antibody is un-conjugated
Application:	Western Blotting (WB)

Product Details

Immunogen:	Synthetic phospho-peptide corresponding to amino acid residues surrounding Ser239 conjugated to KLH
Cross-Reactivity:	Mouse (Murine)
Predicted Reactivity:	bovine, human, non-human primate and sheep
Purification:	Antigen Affinity Purified from Pooled Serum

Target Details

Target:	ATRIP
Alternative Name:	ATRIP (ATRIP Products)
Molecular Weight:	'86 kDa

Target Details

Gene ID: 84126

UniProt: [Q8WXE1](#)

Application Details

Application Notes: Optimal working dilution should be determined by the investigator.

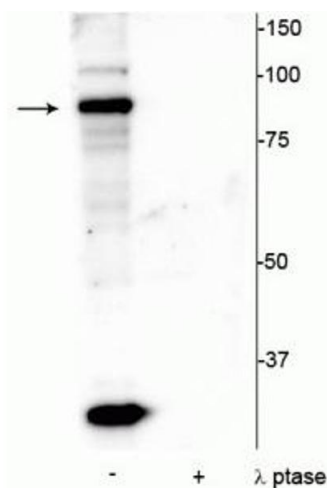
Restrictions: For Research Use only

Handling

Buffer: 100 μ L in 10 mM HEPES (pH 7.5), 150 mM NaCl, 100 μ g per ml BSA and 50 % glycerol.

Storage: -20 $^{\circ}$ C

Images



Western Blotting

Image 1. Western blot of mouse testicular lysate showing specific immunolabeling of the ~86 kDa ATRIP protein phosphorylated at Ser239 in the first lane (-). Phosphospecificity is shown in the second lane (+) where the immunolabeling is completely eliminated by lysate treatment with lambda phosphatase (λ -Ptase, 800 units/1mg protein for 30 minutes).