



[Go to Product page](#)

Datasheet for ABIN6254026

## anti-Retinoblastoma Binding Protein 8 antibody (pSer326)

### 1 Image

#### Overview

Quantity:	100 µL
Target:	Retinoblastoma Binding Protein 8 (RBBP8)
Binding Specificity:	pSer326
Reactivity:	Human
Host:	Rabbit
Clonality:	Polyclonal
Conjugate:	This Retinoblastoma Binding Protein 8 antibody is un-conjugated
Application:	Western Blotting (WB)

#### Product Details

Immunogen:	Synthetic phospho-peptide corresponding to amino acid residues surrounding Ser326 conjugated to KLH
Cross-Reactivity:	Human
Predicted Reactivity:	non-human primate
Purification:	Antigen Affinity Purified from Pooled Serum

#### Target Details

Target:	Retinoblastoma Binding Protein 8 (RBBP8)
Alternative Name:	RBBP8 ( <a href="#">RBBP8 Products</a> )
Molecular Weight:	~100 kDa

## Target Details

Gene ID:	5932
UniProt:	<a href="#">Q99708</a>
Pathways:	<a href="#">Cell Division Cycle</a> , <a href="#">DNA Damage Repair</a>

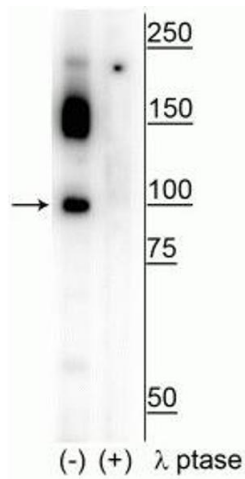
## Application Details

Application Notes:	Optimal working dilution should be determined by the investigator.
Restrictions:	For Research Use only

## Handling

Buffer:	100 $\mu$ L in 10 mM HEPES ( pH 7.5), 150 mM NaCl, 100 $\mu$ g per ml BSA and 50 % glycerol.
Storage:	-20 $^{\circ}$ C

## Images



### Western Blotting

**Image 1.** Western blot of human T47D cell lysate showing specific immunolabeling of the  $\sim$ 100 kDa CtIP phosphorylated at Ser326 in the first lane (-). Phosphospecificity is shown in the second lane (+) where immunolabeling is completely eliminated by blot treatment with lambda phosphatase ( $\lambda$ -Ptase, 1200 units for 30 min).